



# CITY OF MERCER ISLAND

## CITY COUNCIL MEETING AGENDA

Thursday  
October 8, 2015  
5:00 PM

**Mayor Bruce Bassett**

**Deputy Mayor Dan Grausz**

**Councilmembers Debbie Bertlin, Jane Brahm,  
Mike Cero, Terry Pottmeyer, and Benson Wong**

Contact: 206.275.7793, [council@mercergov.org](mailto:council@mercergov.org)  
[www.mercergov.org/council](http://www.mercergov.org/council)

All meetings are held in the City Hall Council Chambers at  
9611 SE 36th Street, Mercer Island, WA unless otherwise noticed

“Appearances” is the time set aside for members of the public to speak to the City Council about any issues of concern. If you wish to speak, please consider the following points:  
(1) speak audibly into the podium microphone, (2) state your name and address for the record, and (3) limit your comments to three minutes.

*Please note: the Council does not usually respond to comments during the meeting.*

## CALL TO ORDER & ROLL CALL

## SPECIAL BUSINESS

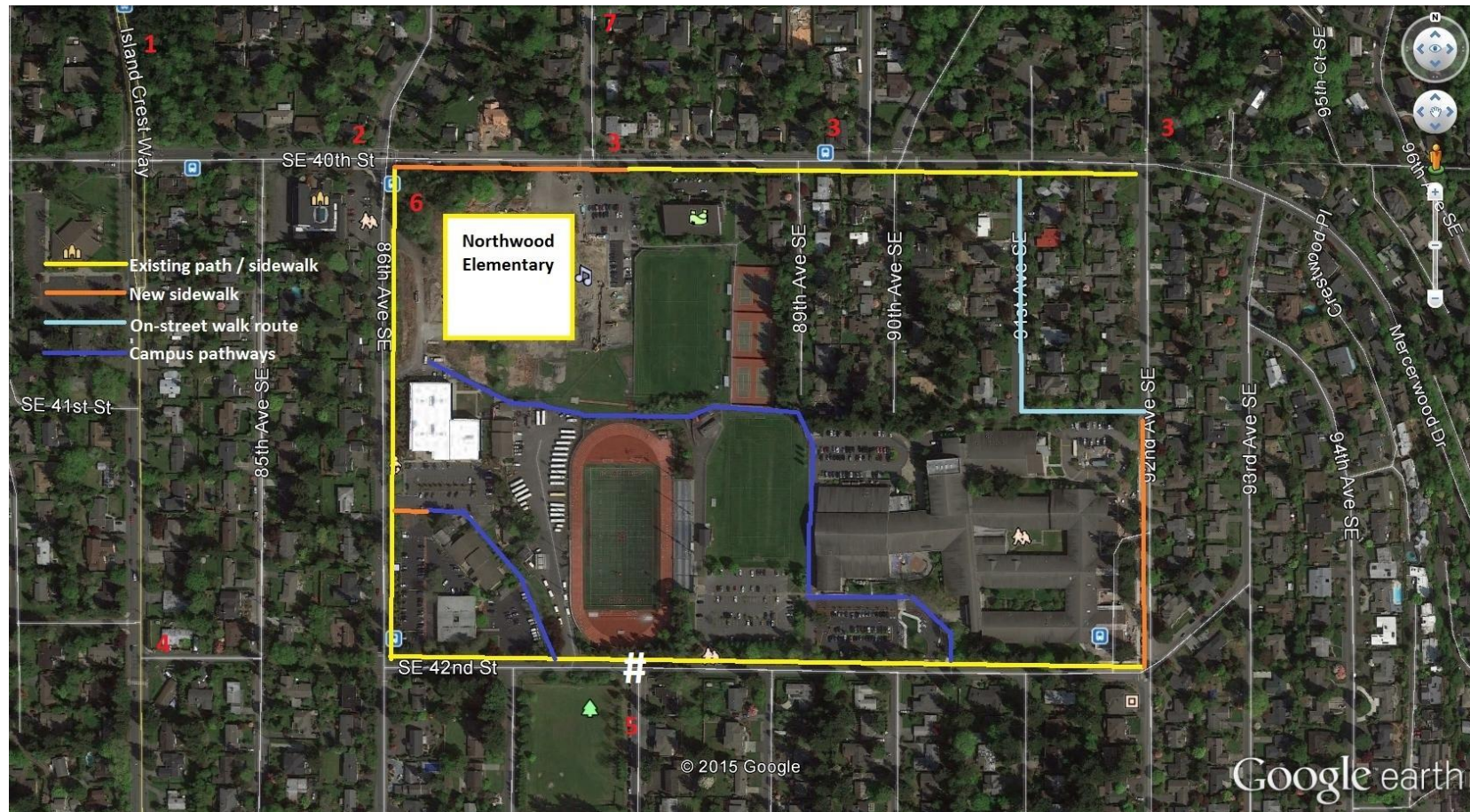
1. School Construction Update - including the Mary Wayte Pool and Safe Routes to Schools
2. Emergency Drill Review
3. Transportation Issues and Street Improvements relating to schools

## ADJOURNMENT

# Mercer Island School District Campus

## Safe Routes to School



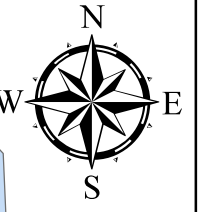


## City of Mercer Island Capital Projects supporting Safe Routes to School

- 1** 84<sup>th</sup> Ave. SE, east side, gravel shoulder, completed 2015
- 2** Madrona Crest sidewalk, 86<sup>th</sup> Ave SE from SE from 40<sup>th</sup> to SE 39<sup>th</sup>, planned for 2016  
Madrona Crest sidewalk, 86<sup>th</sup> Ave SE from SE 39<sup>th</sup> to SE 36<sup>th</sup>, tentatively planned for 2018
- 3** SE 40<sup>th</sup> intersections with 88<sup>th</sup> Ave SE, Gallagher Hill Road, and 92<sup>nd</sup> Ave SE, sidewalk landings and curb ramps, planned for 2016
- 4** Pathway construction on SE 42<sup>nd</sup>, between Island Crest Way and 86<sup>th</sup> Ave SE, planned for 2016
- 5** Improve existing trails south of District Campus completed 2015; improve crosswalk at SE 42<sup>nd</sup> and 88<sup>th</sup> Ave SE
- 6** Widen SE 40<sup>th</sup> Corridor east of Island Crest Way to provide dedicated turn lane, planned for 2017
- 7** Improve existing walkway, east side of 88<sup>th</sup> Ave SE north of SE 40<sup>th</sup> to SE 36<sup>th</sup>, planned for 2016

## City Capital Projects Supporting Safe Routes to New Elementary School

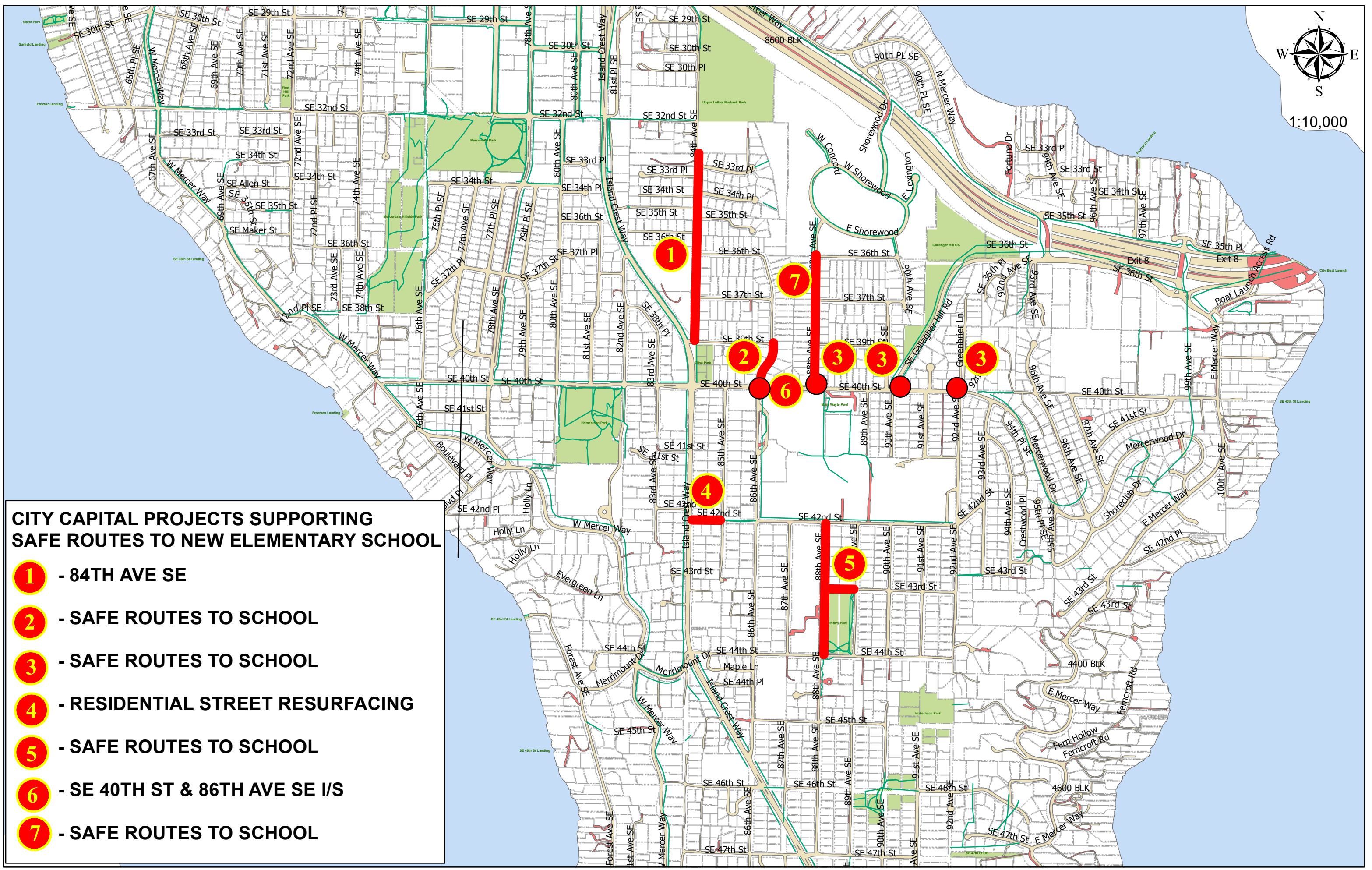
- 1) 84<sup>th</sup> Avenue SE from SE 39<sup>th</sup> Street to Upper Luther Burbank Park  
Install gravel shoulder pedestrian facility adjacent to 84<sup>th</sup> Avenue SE on the east side of the road to provide a link between the SE 39<sup>th</sup> Street/Clise Park/Island Crest Way area. Project completed spring 2015
- 2) Safe Routes – Madrona Crest (86<sup>th</sup> Avenue) Sidewalk  
Install curb, gutter and sidewalk along 86<sup>th</sup> Avenue SE on the east side of the road to provide a 'safe walk route' to the new elementary school. Phase 1 between SE 40<sup>th</sup> and SE 39<sup>th</sup> will be constructed spring/summer 2016 with a planned completion by the first day of school. Phase 2 (SE 39<sup>th</sup> to SE 36<sup>th</sup>) is programmed as a placeholder for 2018 and is currently unfunded.
- 3) Safe Routes to School – New Elementary School  
Install sidewalk landings and curb ramps on SE 40<sup>th</sup> Street at the intersections of 88<sup>th</sup> Avenue SE, Gallagher Hill Road and 92<sup>nd</sup> Avenue SE to improve safety and access for pedestrians. This will be constructed in 2016.
- 4) Pathway construction on SE 42<sup>nd</sup> Street  
Install separated pathway along SE 42<sup>nd</sup> Street on the south side of the road to complete a missing section of a pedestrian route between Island Crest Way and 86<sup>th</sup> Avenue SE. This will be constructed in 2016 as part of the Residential Street Resurfacing project.
- 5) Safe Routes to School – New Elementary School  
Improve existing trails south of the school district's megablock campus. Improvements along 88<sup>th</sup> Avenue SE from SE 42<sup>nd</sup> to SE 44<sup>th</sup> and on SE 43<sup>rd</sup> Street between 88<sup>th</sup> Ave SE and 89<sup>th</sup> Avenue SE were completed in 2015.
- 6) SE 40<sup>th</sup> Street Corridor, East of Island Crest Way  
Widen SE 40<sup>th</sup> Street at 86<sup>th</sup> Avenue SE to provide a dedicated left-turn lane on the east leg of the intersection. Preliminary engineering is funded in 2016 with construction of the project funded for 2017.
- 7) Safe routes to School – New Elementary School  
Improve existing walkway on the eastside of 88<sup>th</sup> Avenue SE north of SE 40<sup>th</sup> to SE 36<sup>th</sup> Street. This will be completed in 2016.



1:10,000

### CITY CAPITAL PROJECTS SUPPORTING SAFE ROUTES TO NEW ELEMENTARY SCHOOL

- 1** - 84TH AVE SE
- 2** - SAFE ROUTES TO SCHOOL
- 3** - SAFE ROUTES TO SCHOOL
- 4** - RESIDENTIAL STREET RESURFACING
- 5** - SAFE ROUTES TO SCHOOL
- 6** - SE 40TH ST & 86TH AVE SE I/S
- 7** - SAFE ROUTES TO SCHOOL



# Construction Update Mercer Island School District

## MERCER ISLAND HIGH SCHOOL

- Scope of Work:
- 15,000 square foot addition, 4 science classrooms, 6 general purpose classrooms
  - Main Entry drive and parking lot reconfiguration
  - Relocation and extension of bus loading area along 92<sup>nd</sup> Avenue SE including sidewalks from SE 42<sup>nd</sup> St to 41<sup>st</sup> Street
  - Extension of loading zone along SE 42<sup>nd</sup> Street



# Construction Update Mercer Island School District

---

## MERCER ISLAND HIGH SCHOOL



Status of Work: Substantially complete. Punchlist and closeout activities continue

Schedule / Budget: Completed on-time and within budget



# Construction Update Mercer Island School District

## ISLANDER MIDDLE SCHOOL – PARTIAL REPLACEMENT

- Scope of Work:
- 93,000 square feet of new construction including
    - 8 general purpose classrooms
    - 2 science classrooms
    - 2 special education classrooms
    - 2 shared learning areas
    - 3 music classrooms and 6 practice rooms
    - Library
    - Kitchen and Commons / Lunch Room
    - Main Gym, Auxiliary Gym, Fitness Room, & Locker Rooms
    - Administrative & Counseling
  - Parking lot and student loading zone reconfiguration including the addition of a queuing lane along 84<sup>th</sup> Ave. SE





# Construction Update Mercer Island School District

## ISLANDER MIDDLE SCHOOL – PARTIAL REPLACEMENT



Status of Work:      Approximately 30% complete  
                             Structural masonry and steel under way  
                             Completing footings at Commons/Kitchen

Schedule / Budget:    On schedule for completion fall of 2016  
                             Within budget



# Construction Update

# Mercer Island School District

---

## NORTHWOOD ELEMENTARY SCHOOL

- Scope of Work:
- 77,000 square feet of new construction including
    - 20 general purpose classrooms
    - 2 developmental pre-school classrooms
    - Library, Kitchen / Commons / Lunch Room / Administrative and Counseling
    - Gym that includes a High School sized court
    - Special ed, art, technology, and music classrooms
    - 8 shared learning areas
  - Maintain parking on east side of site for 67 High School students and after school use by Mary Wayte Pool
  - Dedicated bus loop off SE 40<sup>th</sup> Street
  - Parking and student loading on west side
  - Queuing lane northbound on 86<sup>th</sup> Ave. SE along with frontage improvements. Frontage improvements along south side of SE 40<sup>th</sup> Street



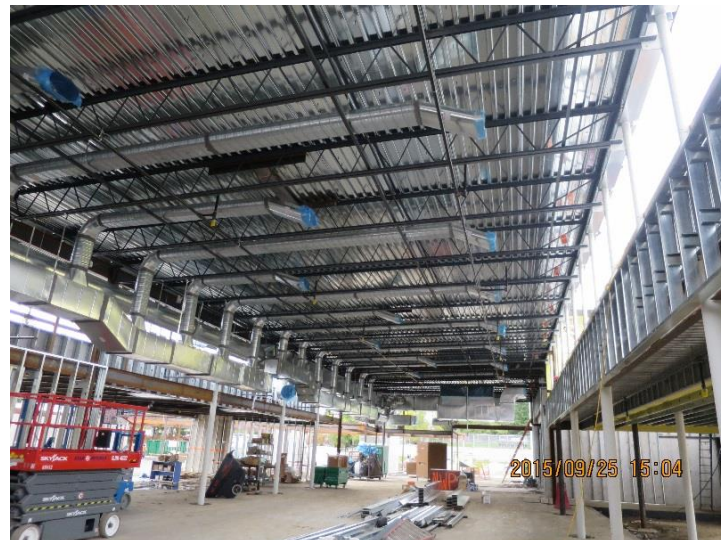
# Construction Update Mercer Island School District

## NORTHWOOD ELEMENTARY SCHOOL



# Construction Update Mercer Island School District

## NORTHWOOD ELEMENTARY SCHOOL



Status of Work:	Approximately 40% complete  Structural steel complete, roofing, framing, dry-in underway
Schedule / Budget:	On schedule for completion summer of 2016  Within budget



# Construction Update Mercer Island School District

## MARY WAYTE POOL – 2015 Improvements

- Scope of Work:
- Resurface fiberglass liner and bulkhead  
King County Parks Grant funds utilized – 40% District Funds, 60% King County
  - Re-lamp all natatorium fixtures with LED bulbs
  - Miscellaneous interior clean-up and painting by OAC (Olympic Aquatics)
  - Miscellaneous landscape work



Status of Work: Complete

Schedule / Budget: Pool liner completed 2-weeks early, pool reopened early  
Within budget



## City Council/MISD Board of Directors Study Session

Briefing Paper on Discussion Topics

October 8, 2015

### 1) School Construction Update; Mary Waite Pool; Safe Routes to School

#### Construction Update

**Mercer Island High School** – The MIHS Addition construction has been completed. A ribbon-cutting ceremony was held on August 18, 2015 and attended by a number of district and city officials. The MIHS Addition has been well-received by students and staff. The project included the addition of 14 new classrooms, a reconfiguration of the front parking lot, a new student pick-up/drop-off lane, a new bus pullout area along 92<sup>nd</sup> Ave., SE, and an extended drop-off area along SE 42<sup>nd</sup> Street. There are 16 new benches, beautifully crafted from the trees that were removed during the project and now serve as an outdoor learning classroom. These benches are also distributed around the inside and outside of the school.

**Islander Middle School** – The IMS Expansion project is well underway with poured concrete slabs for the new gym, music wing and classrooms. Steel erection for the new classroom wing has begun. The large CMU walls continue to go up, along with excavation and footings for the commons area.

The parking area off 84<sup>th</sup> Ave., SE has been transformed to provide use by the construction team while maintaining a separate pick-up/drop-off lane for students. The parking lot will remain unfinished during the 2015/16 school year because the current kitchen, lunch room, and music classrooms will be demolished next summer. After demolition of the structures next summer, a new entry courtyard and rain garden will be built. Once the buildings are removed, the final work on the parking lot, new striping, signage, and landscaping will be installed. Additional site work this summer included the installation of two large concrete pads adjacent to the track. One pad is home to containers that provide emergency storage. The other long, narrow pad, will house a waste enclosure as well as a storage building for outdoor sports equipment.

**Northwood Elementary** – Great progress is being made with construction of this new elementary school. The steel structure is nearing completion, metal framing is progressing and exterior sheathing has started. Plumbing and HVAC ductwork inside the building is underway.

The large storm water infiltration system is progressing as planned. The excavation and placement of pipe was completed in August and the contractor is placing the rock in, over, and around the pipes. Relocation of the high school's track and field events is moving along smoothly. Retaining walls are in and backfilling of soil is underway.

Mary Waite Pool –Major improvements were made to the pool liner during the short-term closure of the MWP this August. The district is continuing its efforts to upgrade major infrastructure systems in the coming years. These improvements are listed as part of the 2016 Capital Projects Levy for a total of \$3.8M. The Interlocal Agreement between the City and District called for a \$3.0M upgrade. However the additional \$800,000 will extend the life of MWP for at least another few decades, assuming the City will extend and continue to provide an operating subsidy to the District beyond the ten-year agreement.

Safe Routes to School— This will be discussed as part of Transportation Issues and Street Improvements topic referenced below.

## **2) Emergency Drill Review**

The emergency drill called Operation Safe Community, took place in August, just prior to the opening of school. The exercise tested three areas: tactical scene testing; reunification process; and the Emergency Operation Center. Staff will share lessons learned and ideas for how the agencies plan to work together to implement changes that need to occur.

## **3) Transportation Issues and Street Improvements Relating to Schools**

Anne Tonella-Howe and Brandy Fox will provide an update on the safe routes to school. In addition, staff will also update the Council and Board on street improvements relating to schools.