

REMOVE TREES, CLEAR & GRUB, REMOVE/CAP IRRIGATION. SEE LANDSCAPE DEMOLITION EXHIBIT FOR DETAILS. REFER TO CITY HALL AS-BUILT SHEETS E1.1 AND L2 FOR LOCATION OF STREET LIGHT WIRING AND IRRIGATION

DEMO (E) ISLAND
965 SF

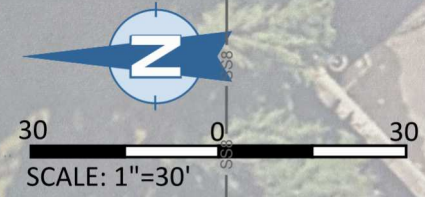
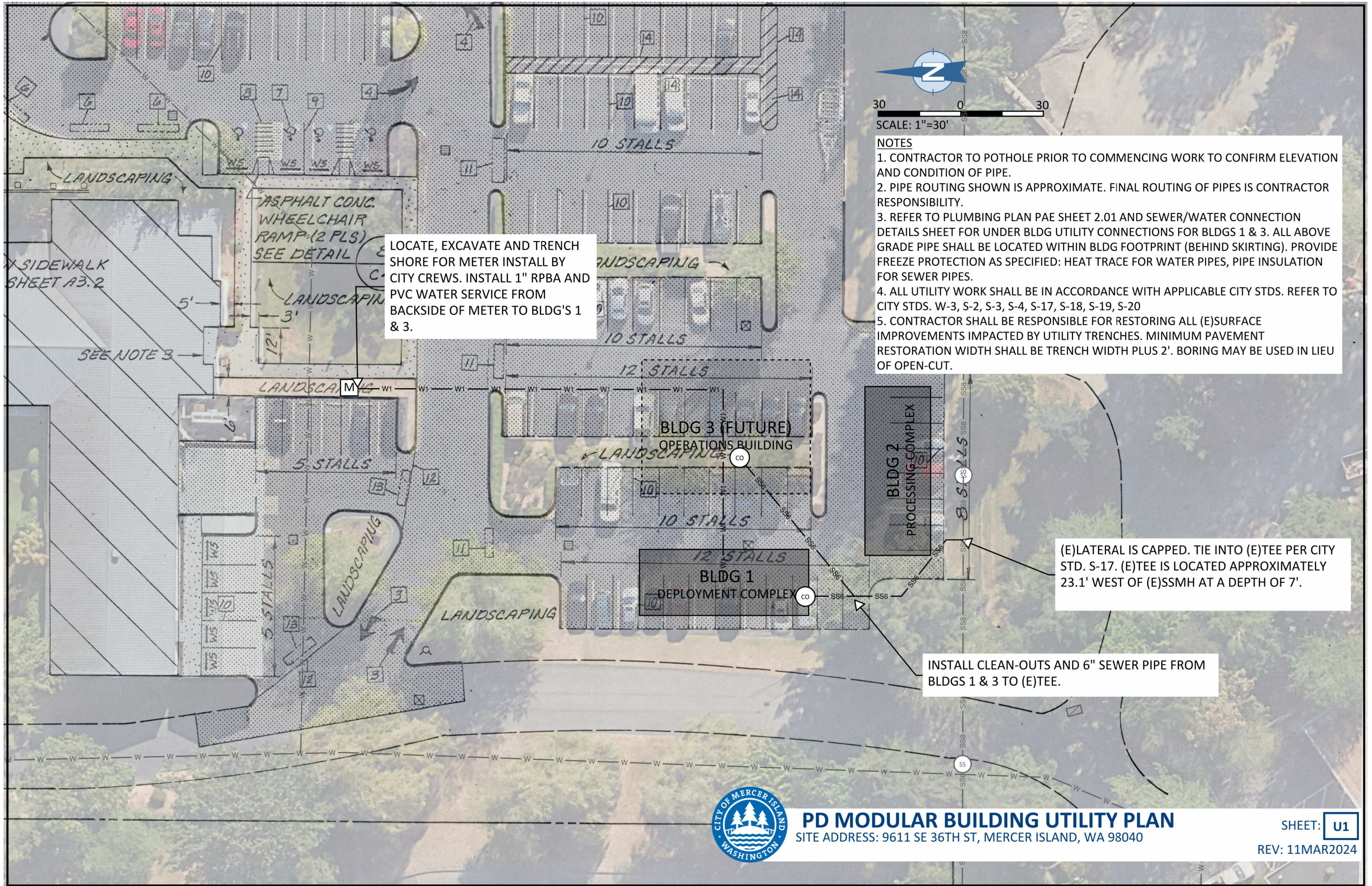


PD MODULAR BUILDING DEMOLITION PLAN

SITE ADDRESS: 9611 SE 36TH ST, MERCER ISLAND, WA 98040

SHEET: **DM1**

REV: 11MAR2024



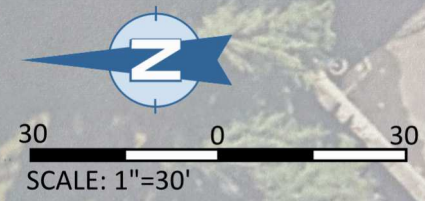
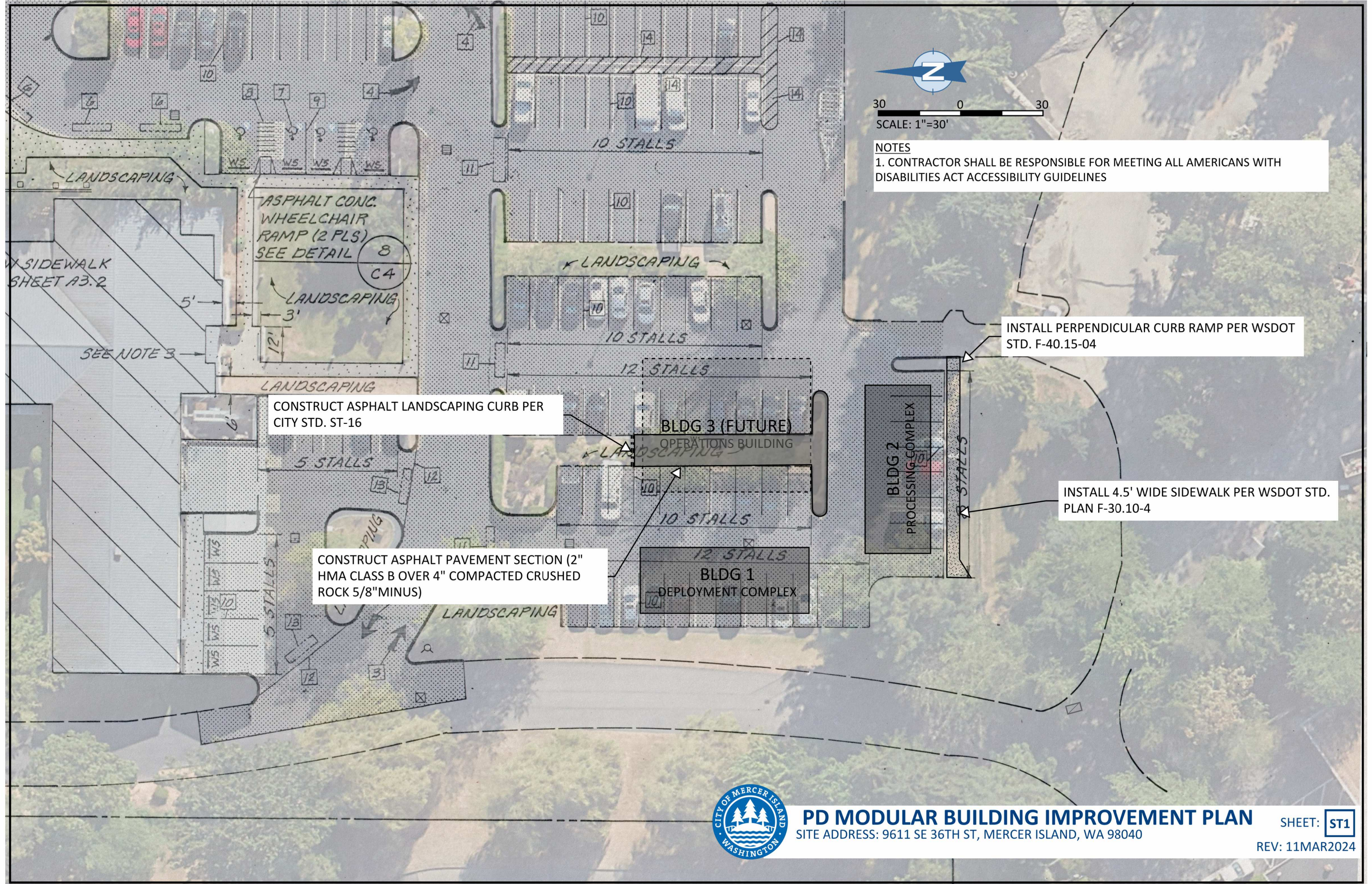
- NOTES**
1. CONTRACTOR TO POTHOLE PRIOR TO COMMENCING WORK TO CONFIRM ELEVATION AND CONDITION OF PIPE.
 2. PIPE ROUTING SHOWN IS APPROXIMATE. FINAL ROUTING OF PIPES IS CONTRACTOR RESPONSIBILITY.
 3. REFER TO PLUMBING PLAN PAE SHEET 2.01 AND SEWER/WATER CONNECTION DETAILS SHEET FOR UNDER BLDG UTILITY CONNECTIONS FOR BLDGS 1 & 3. ALL ABOVE GRADE PIPE SHALL BE LOCATED WITHIN BLDG FOOTPRINT (BEHIND SKIRTING). PROVIDE FREEZE PROTECTION AS SPECIFIED: HEAT TRACE FOR WATER PIPES, PIPE INSULATION FOR SEWER PIPES.
 4. ALL UTILITY WORK SHALL BE IN ACCORDANCE WITH APPLICABLE CITY STDS. REFER TO CITY STDS. W-3, S-2, S-3, S-4, S-17, S-18, S-19, S-20
 5. CONTRACTOR SHALL BE RESPONSIBLE FOR RESTORING ALL (E)SURFACE IMPROVEMENTS IMPACTED BY UTILITY TRENCHES. MINIMUM PAVEMENT RESTORATION WIDTH SHALL BE TRENCH WIDTH PLUS 2'. BORING MAY BE USED IN LIEU OF OPEN-CUT.

LOCATE, EXCAVATE AND TRENCH SHORE FOR METER INSTALL BY CITY CREWS. INSTALL 1" RPBA AND PVC WATER SERVICE FROM BACKSIDE OF METER TO BLDG'S 1 & 3.

(E)LATERAL IS CAPPED. TIE INTO (E)TEE PER CITY STD. S-17. (E)TEE IS LOCATED APPROXIMATELY 23.1' WEST OF (E)SSMH AT A DEPTH OF 7'.

INSTALL CLEAN-OUTS AND 6" SEWER PIPE FROM BLDGS 1 & 3 TO (E)TEE.





NOTES
 1. CONTRACTOR SHALL BE RESPONSIBLE FOR MEETING ALL AMERICANS WITH DISABILITIES ACT ACCESSIBILITY GUIDELINES

INSTALL PERPENDICULAR CURB RAMP PER WSDOT STD. F-40.15-04

INSTALL 4.5' WIDE SIDEWALK PER WSDOT STD. PLAN F-30.10-4

CONSTRUCT ASPHALT LANDSCAPING CURB PER CITY STD. ST-16

CONSTRUCT ASPHALT PAVEMENT SECTION (2" HMA CLASS B OVER 4" COMPACTED CRUSHED ROCK 5/8" MINUS)



PD MODULAR BUILDING IMPROVEMENT PLAN

SITE ADDRESS: 9611 SE 36TH ST, MERCER ISLAND, WA 98040

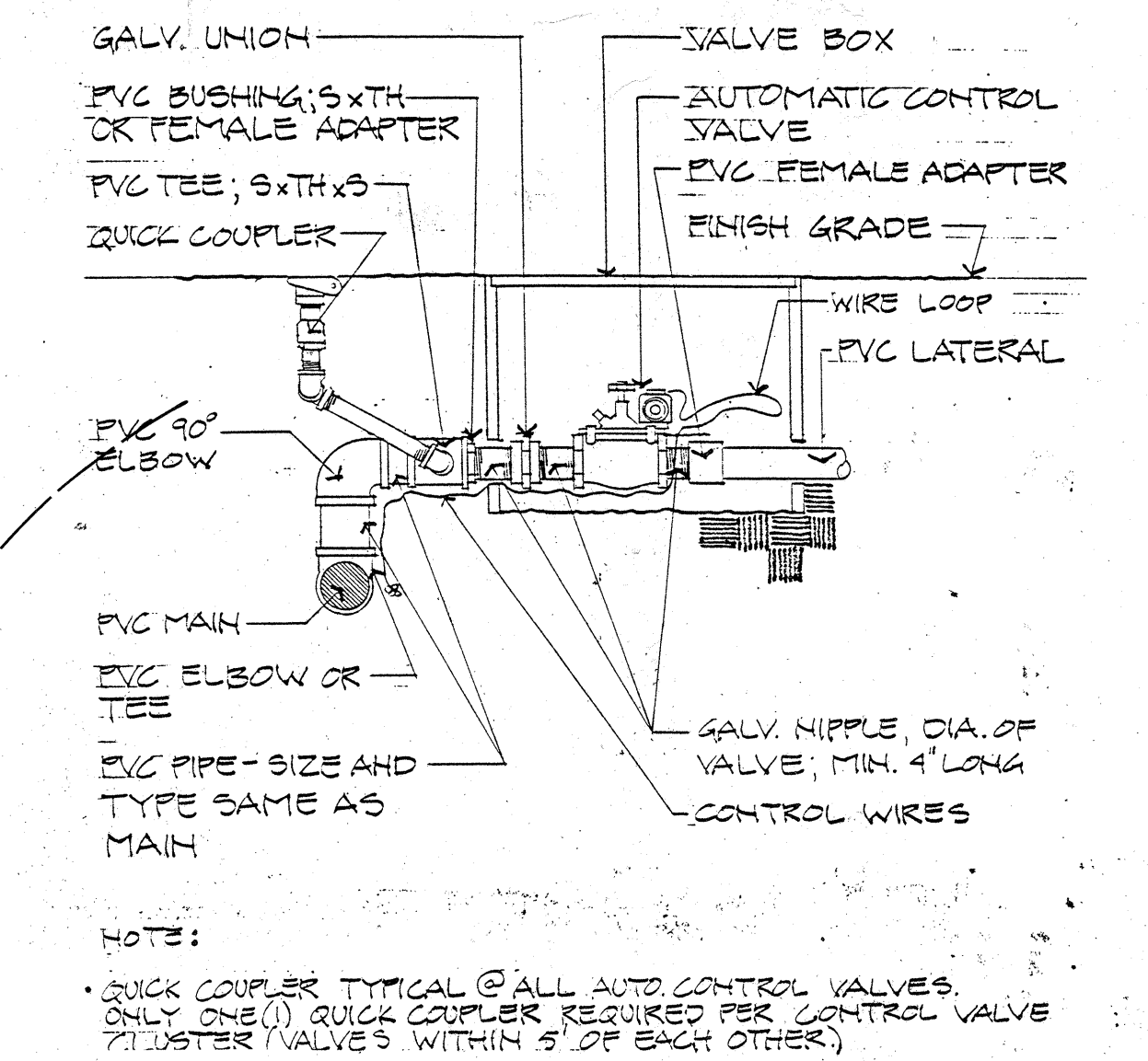
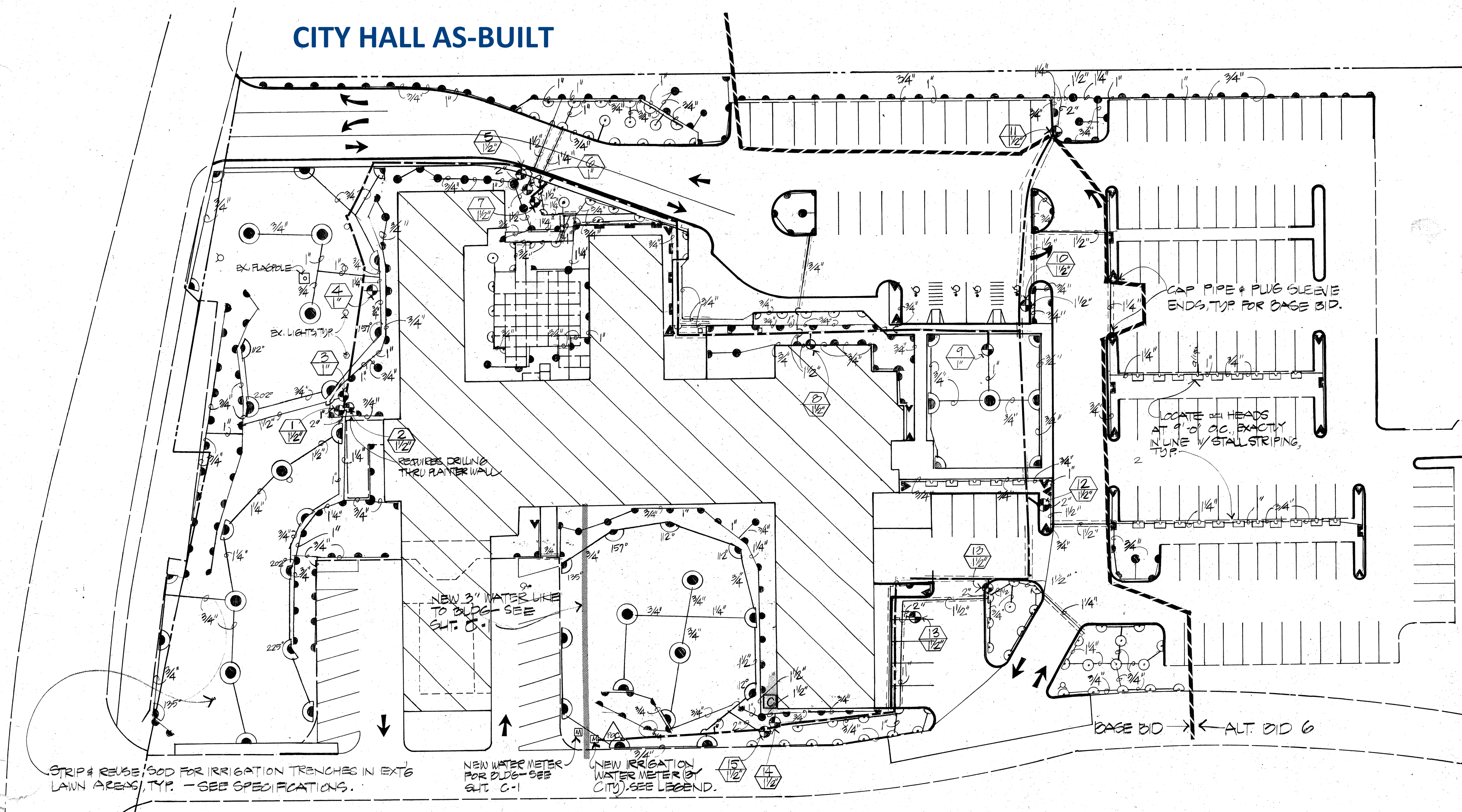
SHEET: **ST1**

REV: 11MAR2024

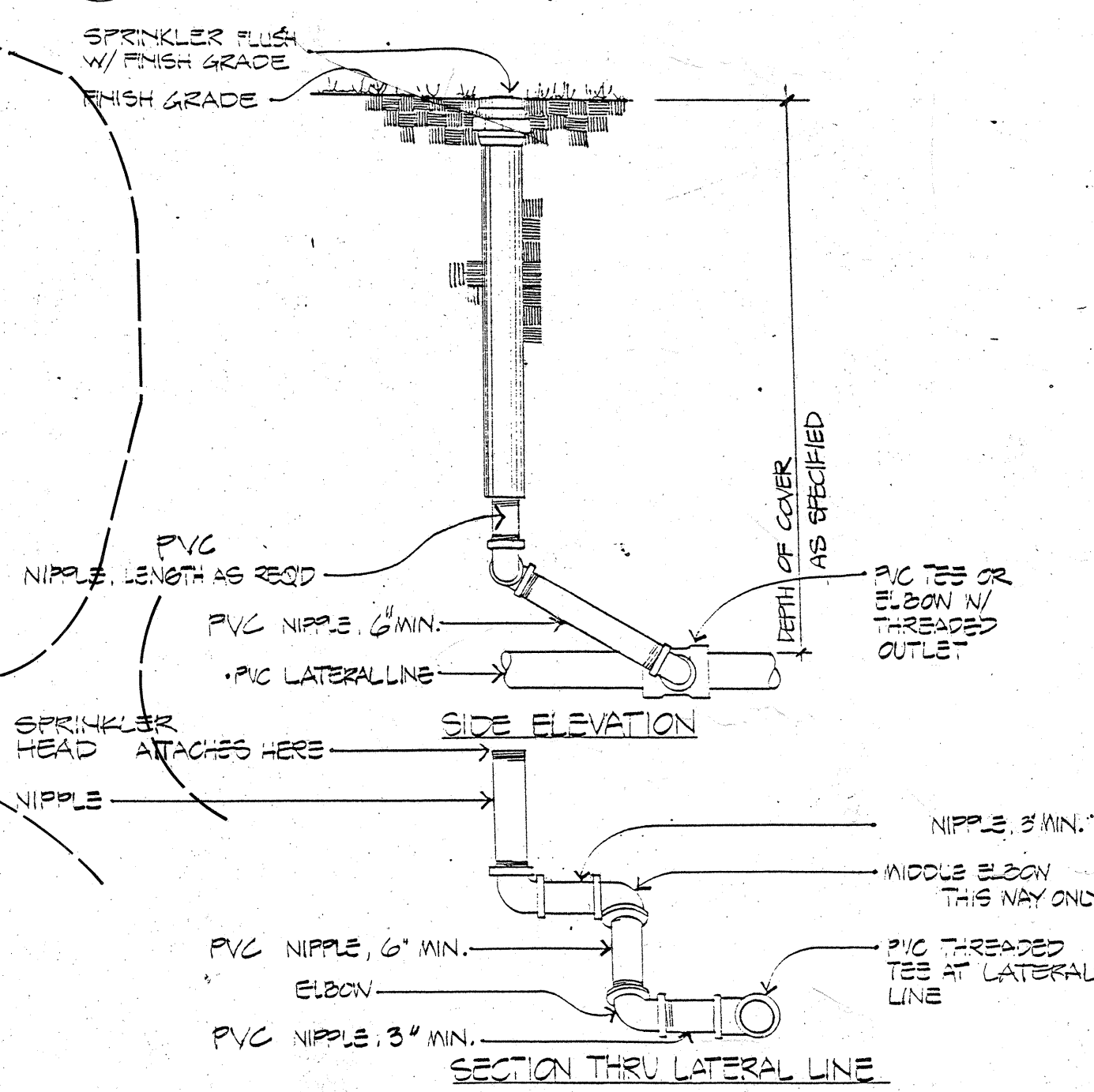
DEMOLITION EXHIBIT



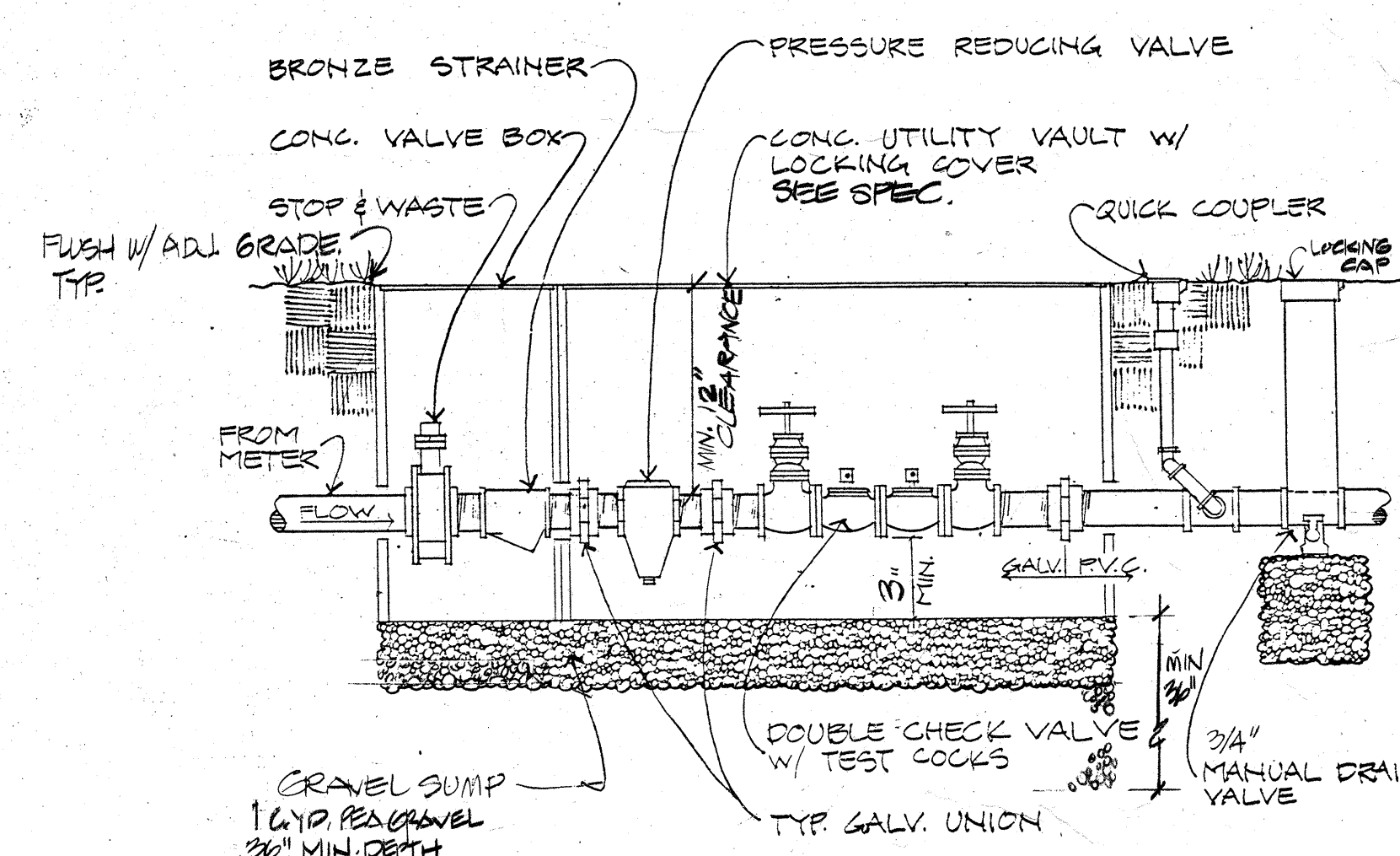
CITY HALL AS-BUILT



1 TYPICAL AUTOMATIC CONTROL VALVE
NOT TO SCALE



2 TYPICAL TRIPLE SWING JOINT
NOT TO SCALE



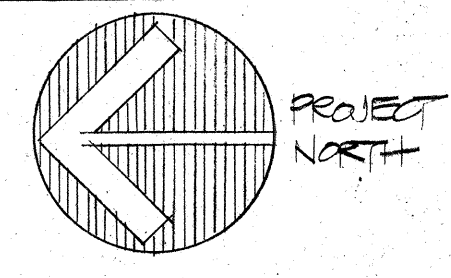
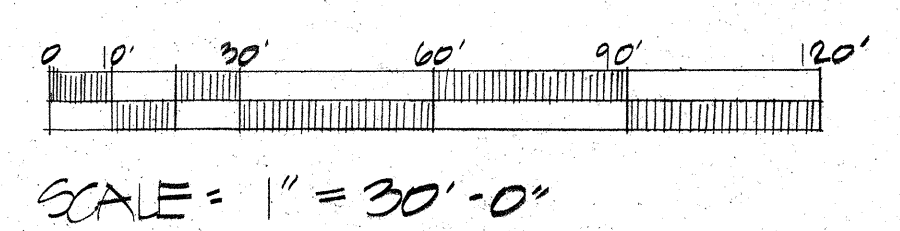
3 TYPICAL DOUBLE CHECK VALVE ASSEMBLY
NOT TO SCALE

STRIP & REUSE GOOD FOR IRRIGATION TRENCHES IN EXTG LAWN AREAS, TYP. - SEE SPECIFICATIONS.

NEW WATER METER FOR BLDG - SEE SHT. C-1

NEW IRRIGATION WATER METER (BY CITY) - SEE LEGEND.

BASE BID: IRRIGATION
 Install all portions of the irrigation system indicated to the north of the dashed line (---), including wiring to the location of valve #11, as specified.
 See Project Manual for description of Alternate 3A: Irrigation.



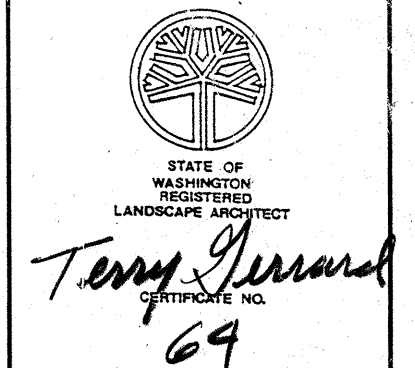
Irrigation Schedule

- LAWN HEAD- Toro 300 Series Stream Rotor Sprinklers; matched precipitation lawn pop-ups with low gallonage (-93) nozzles. Standard full, half, quarter and special arcs as indicated on plan. 30' radius at 50 psi.
- LAWN HEAD- Rainbird 1804 - 12 Series; MPR Plastic 4" pop-ups. Standard full, half, quarter and special arcs as indicated on plans. 11' radius at 25 psi.
- SHRUB HEAD- Rainbird 1806 - 12 Series; MPR plastic 6" pop-ups. Standard full, half, quarter and special arcs as indicated on plans. 11' radius at 25 psi.
- SHRUB HEAD- Rainbird 1806 - 15 SST; plastic 6" pop-up side strip nozzle (4' x 28" pattern at 25 psi).
- SHRUB HEAD- Rainbird 1806 - 17 SST; plastic 6" pop-up side strip nozzle (9' x 18" pattern at 25 psi).
- SHRUB HEAD- Rainbird 1806 - 15 EST; plastic 6" pop-up end strip nozzle (4' x 14" pattern at 25 psi).
- AUTOMATIC CONTROLLER- Rainbird ISC - 16 / 16 station, computer controllable electric controller. Provide with NB Wall Mount Kit and ISC-RC Remote Control Interface. Bolt to exterior masonry wall per location shown on plans (verify exact location with owner's representative). Coordinate with electrical.
- WATER METER- new 1 - 1/2" irrigation water meter by City. VERIFY LOCATION.
- POINT OF CONNECTION- 1 - 1/2" Double Check Valve Assembly, Rainbird # DCA-150. Coordinate with mechanical. VERIFY LOCATION.

- AUTOMATIC VALVES- Rainbird 100-PE-PRS (1" valve) and 150-PE-PRS (1 - 1/2" valve) plastic pressure reducing valves.
 - Indicates zone #
 - Indicates valve size
 - MAINLINE (PRESSURE LINE)- 2" PVC Schedule 40
 - LATERAL LINE- PVC Class 200; sizes as indicated on plans, 3/4" minimum.
 - INDICATES SLEEVING
- ITEMS INCLUDED BUT NOT SHOWN ON PLANS:**
- PRESSURE REDUCING VALVE- Wilkins 600 Bronze Pressure Reducing Valve, install at point of connection.
 - QUICK COUPLER - Rainbird # 5 LRC, 1" brass quick coupling valve with locking rubber cover. Install 1 per automatic valve or cluster of valves, see details and specs.
- NOTE: PRIOR TO COMMENCEMENT OF WORK, VERIFY MIN. WATER PRESSURE OF 90 PSI AT POINT OF CONNECTION. NOTIFY THE LANDSCAPE ARCHITECT IMMEDIATELY OF ANY DISCREPANCIES.**

Zone/Valve Schedule

ZONE	G.P.M.	VALVE SIZE	AREA
1	37.5	1/2"	LAWN - EXTG
2	35.4	1/2"	P.A. - EXTG
3	27.6	"	P.A. - EXTG
4	31	1"	LAWN - EXTG
5	36.7	1/2"	P.A. - NEW & EXTG
6	28.8	1"	P.A. - NEW & EXTG
7	36.8	1/2"	LAWN - NEW & EXTG
8	36.7	1/2"	P.A. - NEW
9	14.5	1"	LAWN - NEW
10	25.89	1/2"	P.A. - NEW & EXTG
11	40.8	1/2"	P.A. - NEW
12	38.9	1/2"	P.A. - NEW/EXTG
13	46.8	1/2"	LAWN - NEW/EXTG
14	44.6	1/2"	P.A. - NEW/EXTG
15	36.0	1/2"	LAWN - EXTG



Mercer Island City Hall

Alterations and Additions to 9611 S.E. 36th Street, Mercer Island Washington



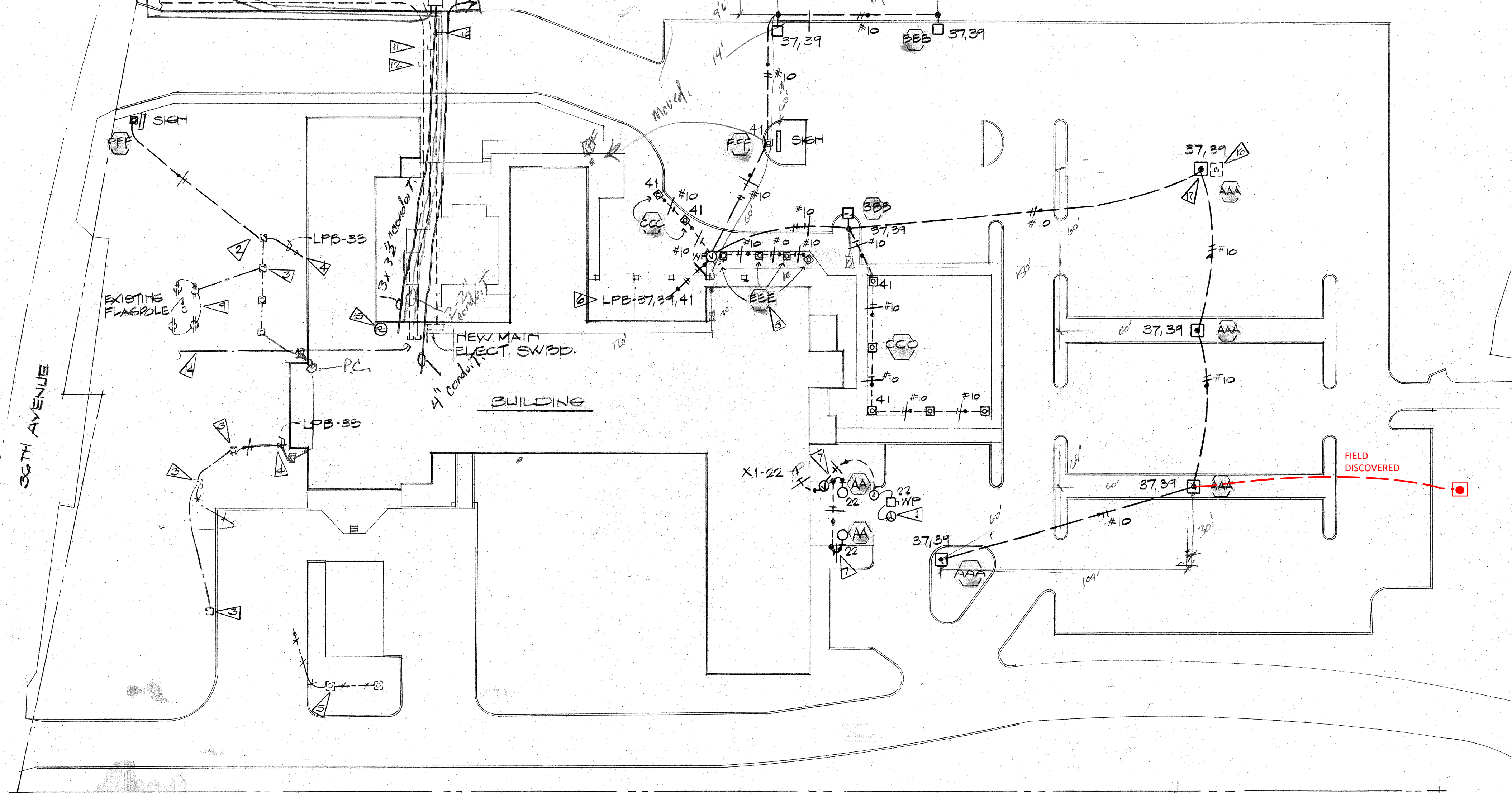
DATE: 10/1/00
 L.A.

EXISTING P.U. TELEPHONE HANDHOLE

CITY HALL AS-BUILT

EXISTING PUGET POWER HANDHOLE

NEW PUGET POWER PAD MOUNT TRANSFORMER



FLAG NOTES

- 1 PROVIDE A WEATHERPROOF 120V-1 PHASE, 20 AMP DISCONNECT AND EQUIPMENT CONNECTION FOR MOTORIZED GATE.
- 2 ROUTE RACEWAY UNDERGROUND FROM NEW SIGN LIGHT, TO EXISTING LANDSCAPE LIGHTING CIRCUIT.
- 3 MAINTAIN EXISTING LANDSCAPE LIGHT FIXTURES. PROVIDE NEW RACEWAY AND CONDUCTORS TO CONNECT TO NEW EXTERIOR LIGHTING CONTROL PANEL.
- 4 REUSE EXISTING RACEWAY INTO BUILDING. EXTEND EXISTING RACEWAY TO PANEL LPB IN BASEMENT VIA LIGHTING CONTACTOR, PHOTOCCELL CONTROL.
- 5 REMOVE EXISTING "MUSHROOM" LANDSCAPE LIGHTS, RACEWAY AND CONDUCTORS.
- 6 ROUTE CIRCUITS TO PANEL LPB VIA EXTERIOR LIGHTING CONTROL PANEL LOCATED IN BASEMENT. SEE ELECTRICAL DETAIL ED-11.
- 7 MOUNT EXTERIOR FLOOD LIGHTS TO FENCE POST TOPS. SEE ELECTRICAL DETAIL ED-9.
- 8 LANDSCAPE GROUND MOUNT LIGHT FIXTURES. ORIENT FIXTURES UPWARD TO HIGHLIGHT LANDSCAPE TREES. PROVIDE A CONCRETE BASE FOR MOUNTING.
- 9 MAINTAIN EXISTING GROUND MOUNTED RECEPTACLES.
- 10 ROUTE NEW ELECTRICAL SERVICE ENTRANCE RACEWAY UNDERGROUND TO NEW PAD MOUNT TRANSFORMER.
- 11 ROUTE NEW SERVICE ENTRANCE RACEWAY ONLY FOR TELEPHONE CABLES, OUT TO EXISTING HANDHOLE. COORDINATE WITH PACIFIC NORTHWEST BELL.
- 12 ROUTE NEW SERVICE ENTRANCE RACEWAY ONLY FOR VIACOM CABLE T.V., OUT TO PROPERTY LINE AT 36TH AVENUE. STUB UP ABOVE GRADE, CAP & MARK FOR USE BY VIACOM.
- 13 PRIMARY ELECTRICAL SERVICE BY PUGET SOUND POWER & LIGHT COMPANY.
- 14 EXISTING POWER & TELEPHONE UNDERGROUND SERVICE ENTRANCE. ABANDON RACEWAY AND FILL ENDS LOCATED IN BUILDING.
- 15 LOCATE PHOTOCCELL ON ROOF FACING NORTH. SEE ELECTRICAL DETAIL ED-11.
- 16 REMOVE EXISTING PARKING LOT LIGHT FIXTURE AND CONDUCTORS. ABANDON RACEWAY AND CIRCUIT.
- 17 CONCRETE POLE BASE SHALL STAND 2'-0" ABOVE GRADE. THIS POLE ONLY.

N **SITE PLAN**
1"=30'



Sparling & Associates, Inc.
ELECTRICAL ENGINEERS
1920 LAKE AVENUE EAST SEATTLE, WASHINGTON 98102
(206) 324-1555

Mercer Island City Hall

Alterations and Additions to 9611 S.E. 36th Street, Mercer Island Washington

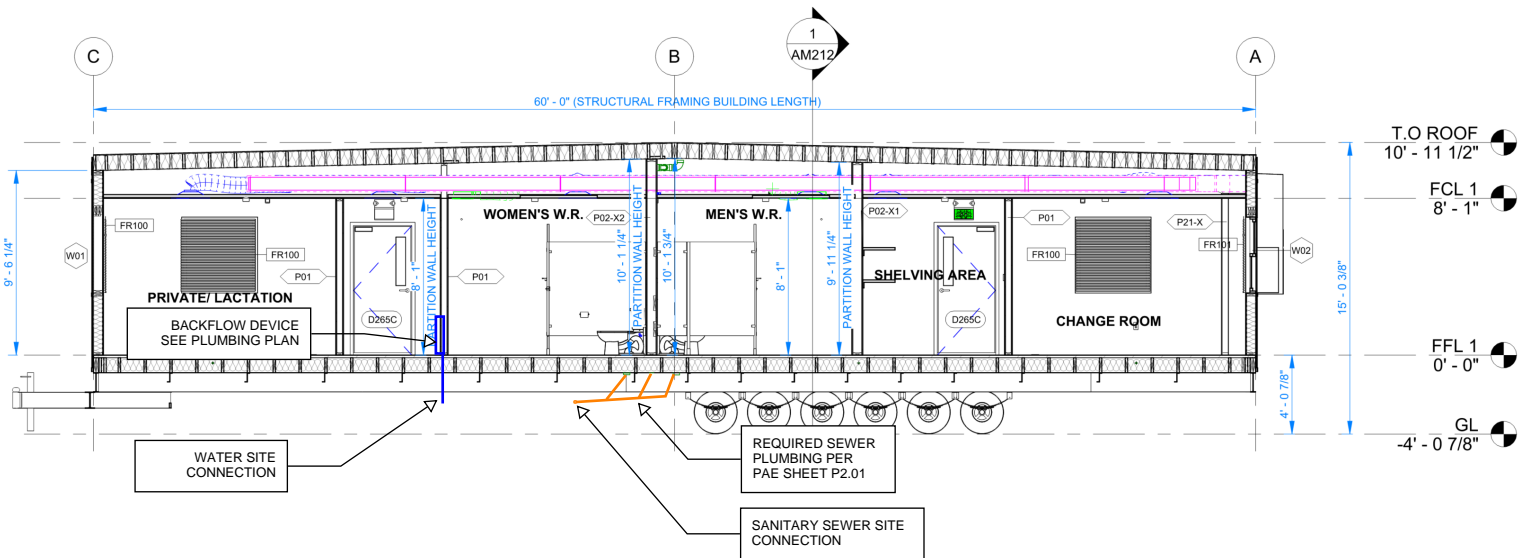
MITHUN - BOWMAN - ENRICH GROUP-PS
ARCHITECTURE
PLANNING AND
INTERIOR DESIGN

2000 112TH AVE NE
BELLEVUE WASH
98004 (206) 454-3344

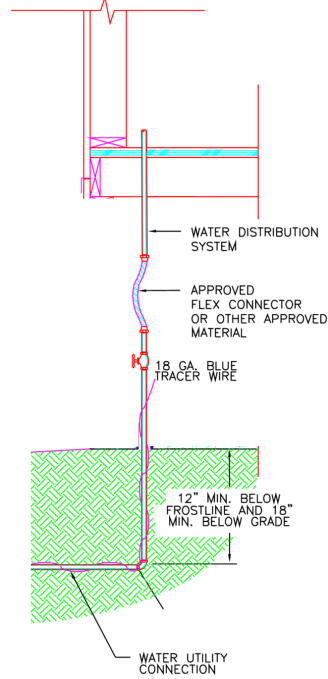
JOB NO.
DATE: 8-24-88

E1.1

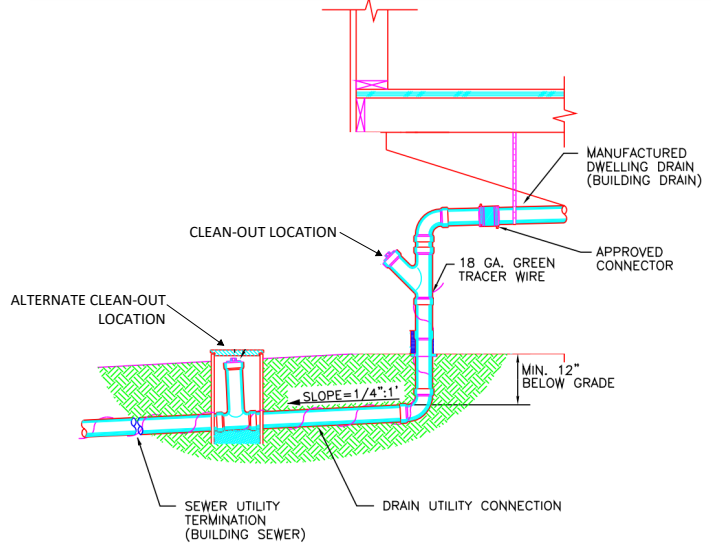
WATER-SEWER CONNECTION DETAIL



WATER SUPPLY CONNECTION DETAIL



SANITARY SEWER CONNECTION DETAIL



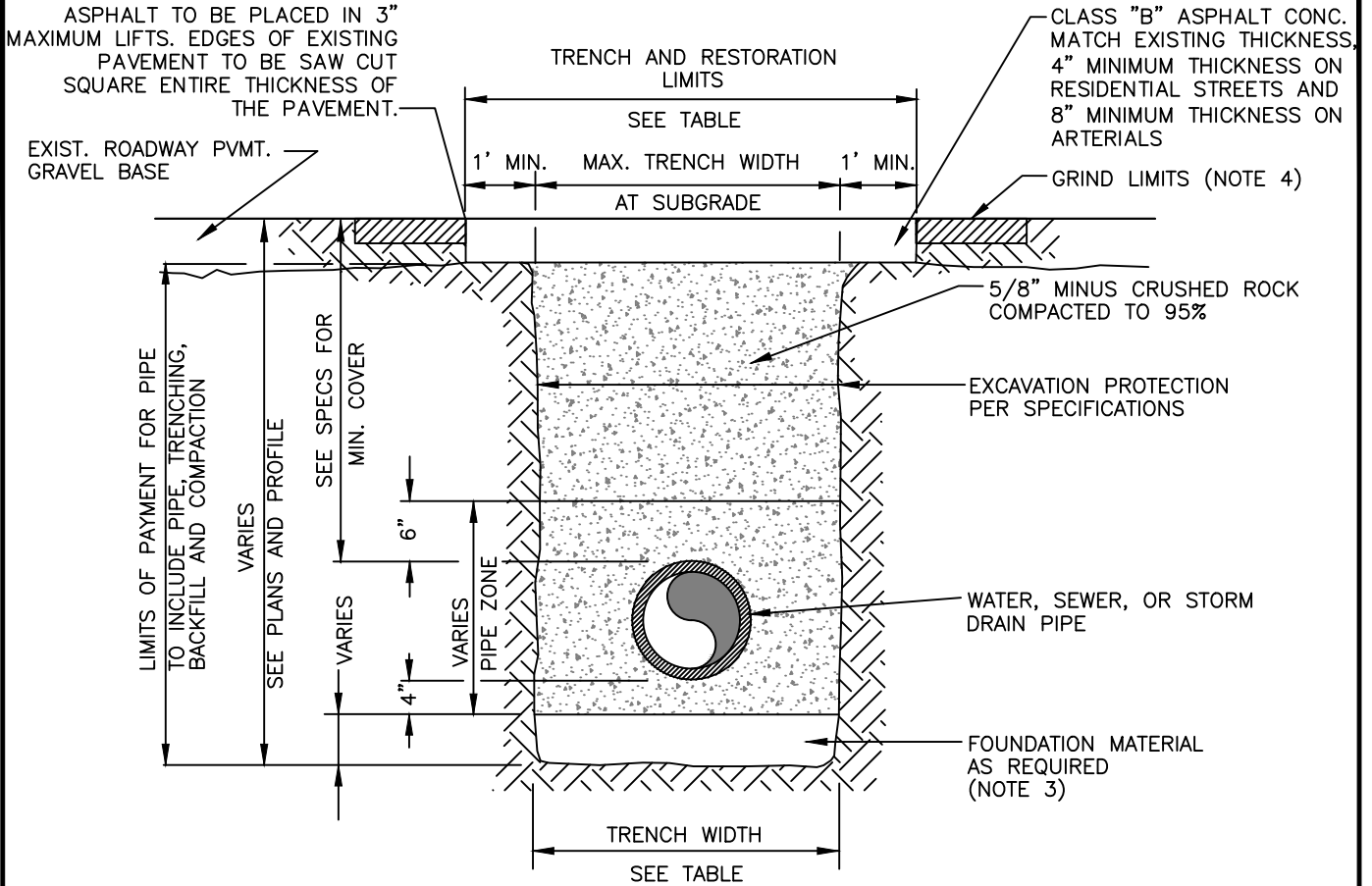
WATER NOTES:

1. AN ACCESSIBLE FULL WAY SHUTOFF VALVE SHALL BE INSTALLED UNDER OR WITHIN 5 FEET OF THE MANUFACTURED BUILDING.
2. PIPING CONNECTIONS SHALL NOT BE SUBJECT TO ANY LOADS FROM THE BUILDING STRUCTURE.
3. BUILDING WATER SUPPLY PIPING SHALL BE PROTECTED FROM FREEZING WITH PIPE INSULATION OR WITH THE INSTALLATION OF AN ELECTRIC HEAT TAPE LISTED OR APPROVED FOR THE BUILDINGS USE.
4. TRACER WIRE SHALL BE BLUE, 18 GAUGE, INSTALLED IN THE TRENCH AND ALONG THE ENTIRE LENGTH OF PIPE.
5. TEST THE WATER SUPPLY TO ASSURE THERE IS NO EVIDENCE OF LEAKAGE UNDER NORMAL OPERATING PRESSURE.

SEWER NOTES:

1. APPROVED PIPING SHALL BE A MINIMUM 3 INCHES IN DIAMETER AND CONSISTING OF APPROVED PIPING NOT LESS THAN SCHEDULE 40. LISTED AND APPROVED SHIELDED FLEXIBLE CONNECTORS MAY BE USED TO JOIN THE DRAINPIPE TO THE SEWER INLET.
2. PIPING SHALL HAVE SUPPORTS OF SUFFICIENT STRENGTH TO KEEP THE PIPING ALIGNMENT AND CARRY THE WEIGHT OF THE PIPING AND ITS CONTENTS. SUPPORTS MAY HANG DOWN FROM THE BOTTOM OF THE MANUFACTURED BUILDING FLOOR OR MAY CONSIST OF BLOCKING FROM THE GROUND UP.
3. PIPING PENETRATIONS THROUGH CONCRETE SLABS OR FOOTINGS SHALL BE SLEEVED SO THERE IS 1/2" CLEARANCE AROUND THE PIPE. EACH PENETRATION SHALL BE CAULKED AROUND.
4. CLEAN-OUTS SHALL BE LOCATED SO THAT A CLEANING TOOL DOES NOT HAVE TO PASS THROUGH MORE THAN 360 DEGREES OF FITTINGS.
5. NONMETALLIC BUILDING SEWER PIPE SHALL HAVE GREEN, 18 GAUGE, INSULATED AND ELECTRICALLY CONDUCTIVE TRACER WIRE INSTALLED ALONG THE ENTIRE LENGTH OF THE TRENCH.
6. TEST EACH DRAIN LINE FOR LEAKS.





WIDTH TRENCH			
PIPE SIZE	PIPE ZONE MAX. TRENCH WIDTH	MAX. TRENCH WIDTH AT SUBGRADE	MAX. RESTORATION WIDTH AT SURFACE
WATER SERVICES	2'-0"	2'-0"	4'-0"
4" OR 6"	2'-2"	3'-0"	5'-0"
8"	2'-4"	4'-0"	6'-0"
10"	2'-6"	4'-0"	6'-0"
12"	2'-8"	4'-6"	6'-6"
16"	3'-0"	5'-0"	7'-0"

NOTES

1. CALL IN LOCATES TWO BUSINESS DAYS BEFORE YOU DIG. (1-800-424-5555)
2. IN RIGHT-OF-WAY USE 100% 5/8 MINUS CRUSHED ROCK FOR BEDDING, PIPE ZONE AND BACKFILL
3. FOUNDATION MATERIAL SHALL BE 1 1/4" MINUS CRUSHED ROCK OR OTHER AGGREGATE AS APPROVED BY CITY ENGINEER.
4. GRIND AND OVERLAY LIMITS SHALL EXTEND A MINIMUM OF 10' PAST THE END OF TRENCH AREAS.
5. SEAL ALL FINAL PATCHING AND PAVING SEAMS WITH LIQUID ASPHALT. SQUEEGEE OR MOP THE SEALER. COVER WITH DRY SAND.



**CITY OF MERCER ISLAND
STANDARD DETAILS
WATER**

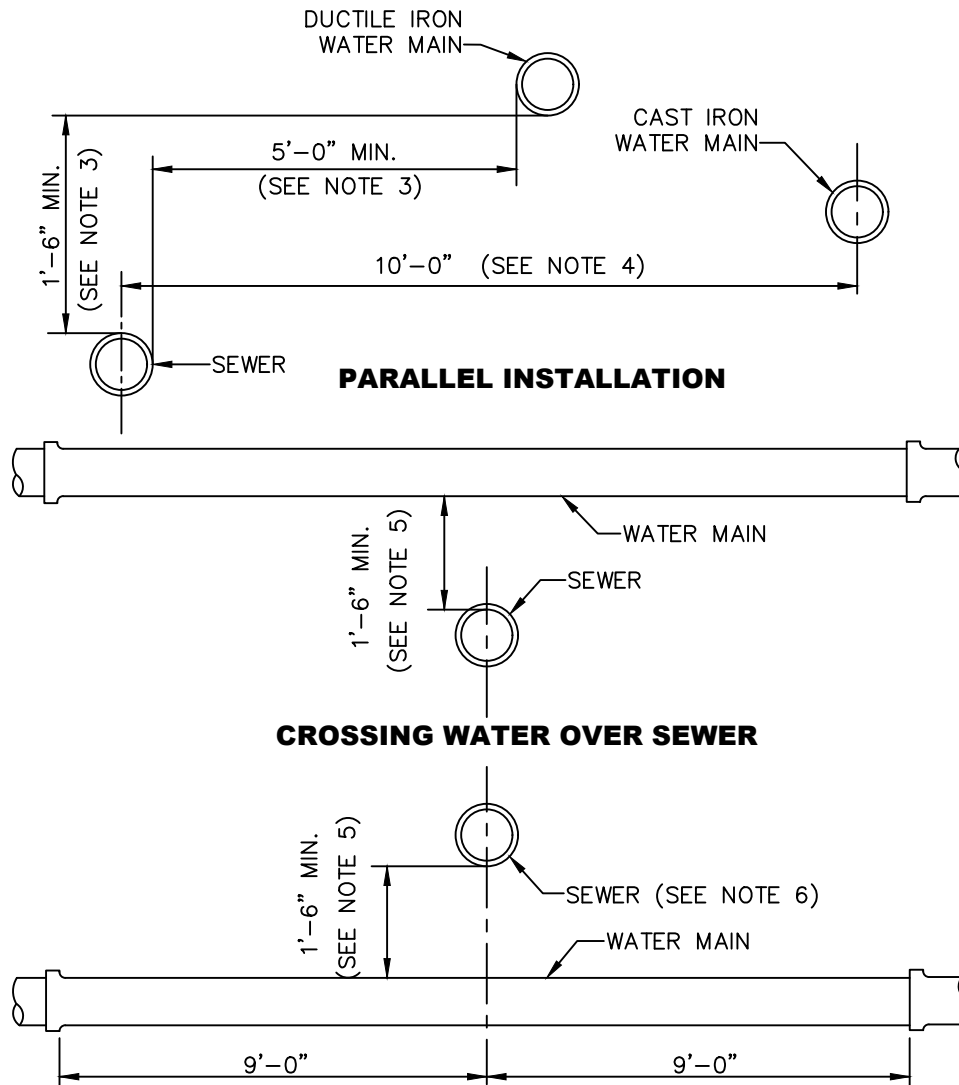
TRENCH SECTION

3-29-2021

NO SCALE

W-3

APPROVED



STANDARD SINGLE 18'-0" NOMINAL LENGTH DUCTILE IRON WATER MAIN SECTION CENTERED AT THE POINT OF CROSSING.

CROSSING WATER UNDER SEWER

NOTES

1. ANY EXCEPTIONS TO THE STANDARD PLAN MAY BE APPROVED BY THE CITY ENGINEER.
2. "SEWER" INCLUDES SANITARY SEWER, COMBINED SEWER AND SIDE SEWER.
3. WHERE MINIMUM CLEARANCES CANNOT BE MET, SEWER SHALL BE CONSTRUCTED OF MATERIALS AND WITH JOINTS THAT ARE EQUIVALENT TO WATER MAIN STANDARDS INCLUDING WATER MAIN PRESSURE TESTING REQUIREMENTS.
4. NO VERTICAL CLEARANCE REQUIRED.
5. IF VERTICAL SEPARATION CANNOT BE MET, WATER MAIN SHALL BE A STANDARD SINGLE 18'-0' NOMINAL LENGTH DUCTILE IRON WATER MAIN SECTION CENTERED AT THE POINT OF CROSSING.
6. SEWER SHALL HAVE ADEQUATE FOUNDATION SUPPORT TO PREVENT SETTLEMENT ON THE WATER MAIN AN TO PREVENT DEFLECTION OF WATER MAIN JOINTS.
7. CROSSINGS AT AN ANGLE BETWEEN 90° AND 45° MAY OCCUR BETWEEN 9'-0" AND 6'-0" OF WATER MAIN JOINT FOR CROSSINGS LESS THAN 45° , SEE NOTE 1.



**CITY OF MERCER ISLAND
STANDARD DETAILS
SEWER**

**WATER & SEWER CLEARANCES
AND MATERIAL REQUIREMENTS**

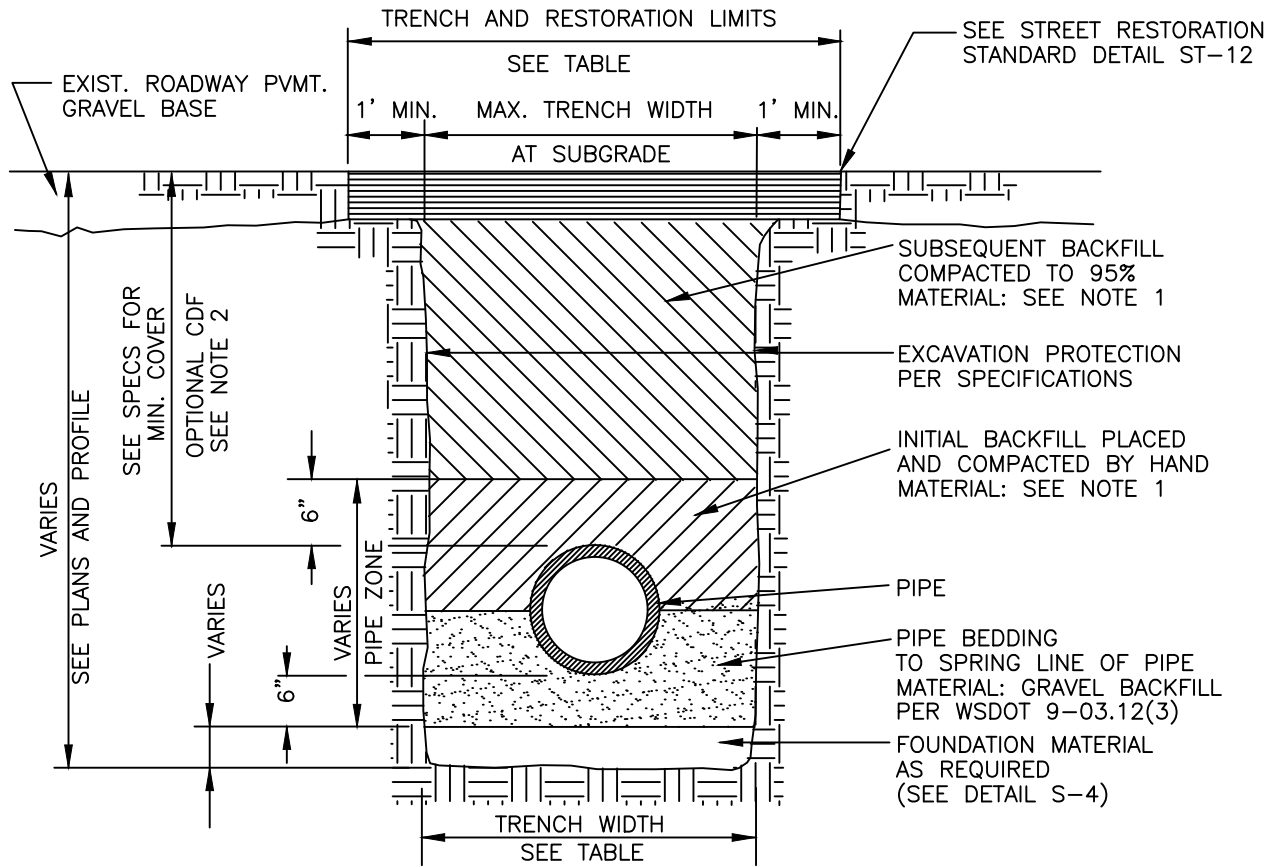
6-5-2009

NO SCALE

S-2

REV DATE

APPROVED



NOTES

1. ALL TRENCH BACKFILL IN PUBLIC RIGHT-OF-WAY OR ROADWAY AREAS SHALL BE CRUSHED SURFACING PER WSDOT 9-09.9(3) OR BANK RUN GRAVEL PER WSDOT 9-03.19, COMPACTED IN 6" LIFTS.
2. CDF FOR BACKFILL MAY BE REQUIRED BY CITY ENGINEER WHEN PROPER COMPACTION AROUND EXISTING UTILITIES MAY NOT BE POSSIBLE. CDF SHALL BE PER WSDOT 2-09.3(1)E.
3. SEE S-4 FOR PIPE BEDDING DETAILS.

TRENCH WIDTH			
PIPE SIZE	PIPE ZONE MAX. TRENCH WIDTH	MAX. TRENCH WIDTH AT SUBGRADE	MAX. RESTORATION WIDTH AT SURFACE
SIDE SEWER	2'-0"	2'-0"	6'-0"
4" OR 6"	2'-2"	3'-0"	8'-0"
8"	2'-4"	4'-0"	8'-0"
10"	2'-6"	4'-0"	8'-0"
12"	2'-8"	4'-6"	8'-6"

CITY OF MERCER ISLAND

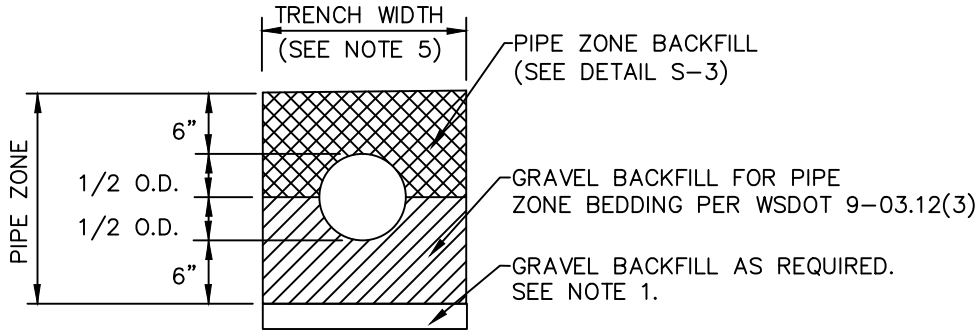
STANDARD DETAILS

SEWER

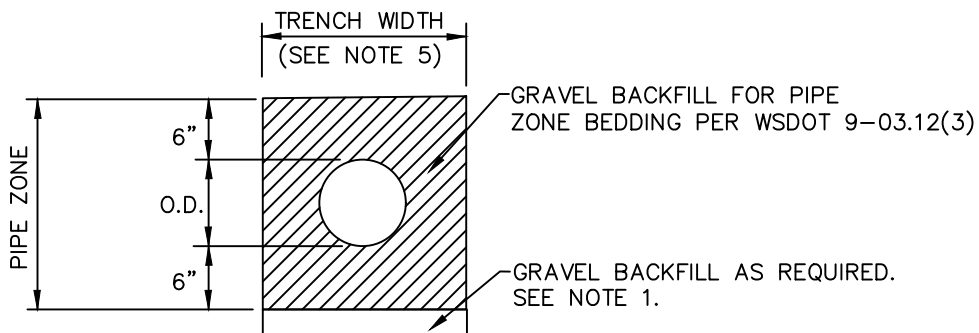
SEWER TRENCH DETAIL

6-5-2009	NO SCALE	S-3
----------	----------	------------

BEDDING FOR RIGID PIPE MATERIAL



BEDDING FOR FLEXIBLE PIPE MATERIAL



NOTES

1. EXCAVATE UNSTABLE MATERIAL DOWN TO FIRM SOIL. REPLACE WITH GRAVEL BACKFILL PER WSDOT 9-03.12(3) AS DIRECTED BY THE CITY ENGINEER.
2. PROVIDE UNIFORM SUPPORT UNDER BARREL.
3. HAND TAMP UNDER HAUNCHES.
4. COMPACT BEDDING AND BACKFILL MATERIAL TO 95% MAX. DENSITY EXCEPT DIRECTLY OVER PIPE. HAND TAMP ONLY UNTIL MINIMUM 6" ABOVE TOP OF PIPE.
5. 30" MAXIMUM TRENCH WIDTH FOR PIPE UP TO AND INCLUDING 12", FOR PIPE LARGER THAN 12", USE O.D. PLUS 16".



CITY OF MERCER ISLAND
STANDARD DETAILS
SEWER

PIPE
BEDDING

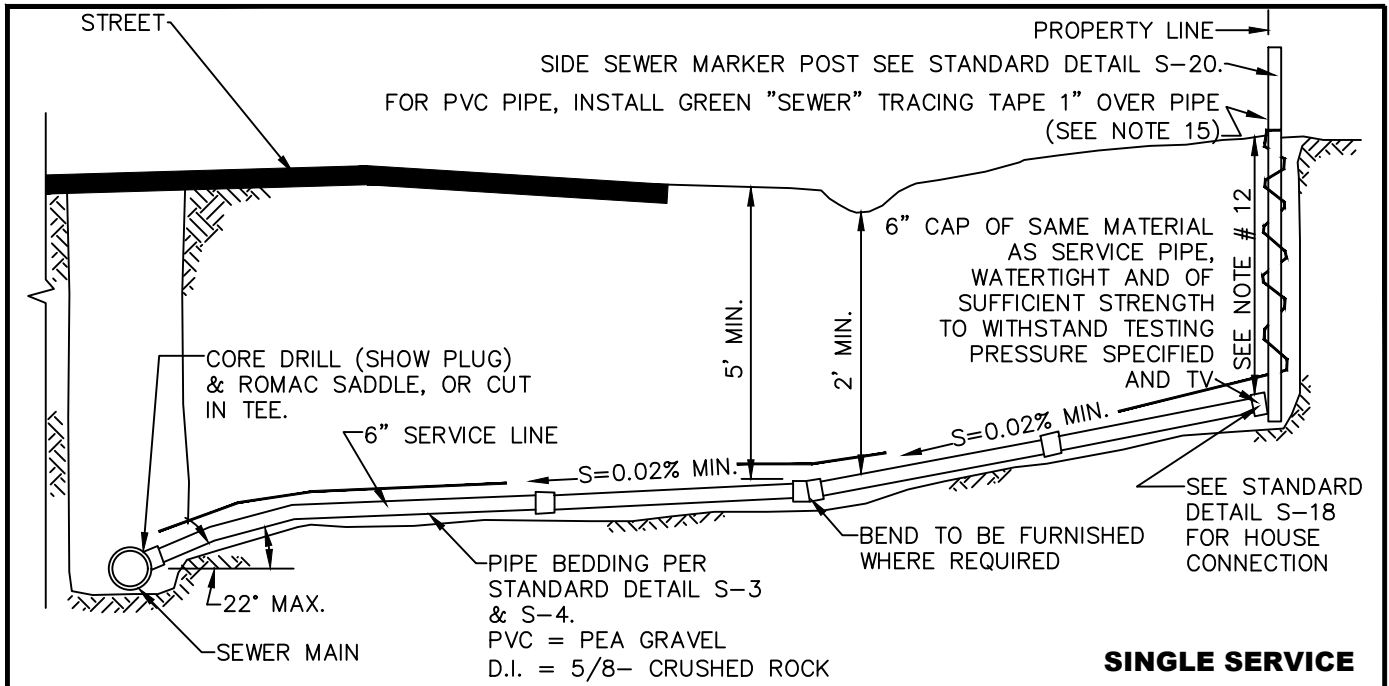
6-5-2009

NO SCALE

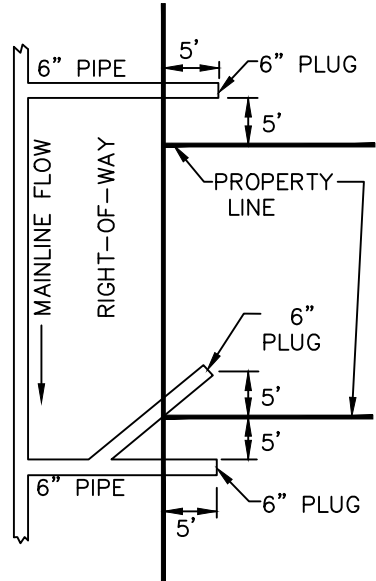
S-4

REV DATE

APPROVED



SINGLE SERVICE



DOUBLE SERVICE

NOTES

1. ELBOWS SHALL NOT BE GREATER THAN 45 DEGREES.
2. CLEAN OUT IS REQUIRED FOR EACH PIPE LENGTH GREATER THAN 100' AND FOR EACH 90° ACCUMULATED ELBOW/100'.
3. RIGHT-OF-WAY RESTORATION SHALL MATCH OR EXCEED THE ORIGINAL CONDITION AND BE IN ACCORDANCE WITH CITY STANDARDS.
4. ALL TRENCH BACKFILL IN PUBLIC RIGHT-OF-WAY OR ROADWAY AREAS SHALL BE CRUSHED SURFACING PER WSDOT 9-09.9(3) OR BANK RUN GRAVEL PER WSDOT 9-03.19, COMPACTED IN 6" LIFTS OR MAY BE CDF WHEN DIRECTED BY THE CITY ENGINEER (SEE DETAIL S-3).
5. LAY PIPE IN STRAIGHT LINE BETWEEN BENDS. MAKE ALL CHANGES IN GRADE OR LINE WITH 1/8 BEND OR WYE. 90° CHANGE WITH 1/8 BEND AND WYE.
6. 6" SEWER PIPE MINIMUM SIZE IN RIGHT-OF-WAY, AND ELSEWHERE AS DIRECTED BY ENGINEER. 2% MIN. GRADE (UNLESS DIRECTED BY ENGINEER), 50% MAXIMUM.
7. ALL A.C. MAINS TO BE TAPPED IN ACCORDANCE WITH WAC 296-62-00775 STATE/FEDERAL GUIDELINES AND CERTIFICATION.
8. CONSTRUCTION IN RIGHT-OF-WAY MUST BE DONE BY A REGISTERED AND LICENSED CONTRACTOR.
9. ALL CONSTRUCTION SHALL BE IN ACCORDANCE WITH CURRENT CITY SEWER ORDINANCES.
10. WHERE CITY ENGINEER ALLOWS SIDE SEWER CONNECTIONS TO MANHOLE, INVERT OF SIDE SEWER SHALL BE EQUAL TO OR ABOVE MAIN SEWER CROWN, BUT NOT TO EXCEED 18" ABOVE INVERT OF MAIN SEWER.
11. UNLESS OTHERWISE INDICATED ON PLAN, SIDE SEWER SHALL BE MIN. OF 6' DEEP AT PROPERTY LINE, OR 5' LOWER THAN THE LOWEST ELEVATION, WHICH EVER IS LOWER.
12. ALL PIPE MATERIALS NOT TO STANDARDS WILL BE ABANDONED AND REPLACED WITH DUCTILE IRON OR PVC PIPE OF THE SAME SIZE.
13. IF A BUILDING SEWER IS TO SERVE MORE THAN ONE PROPERTY, BY JOINT AGREEMENT OF THE OWNERS, AN APPROVED EASEMENT INSURING THAT ALL PROPERTIES INVOLVED SHALL HAVE PERPETUAL USE OF THE SIDE SEWER, HAVING PROVISIONS FOR OPERATION, MAINTENANCE, RECONSTRUCTION AND FOR ACCESS FOR REPAIR PURPOSES, SHALL BE SIGNED BY THE OWNERS. THIS EASEMENT SHALL BE RECORDED WITH THE COUNTY AUDITOR. A SIX INCH (MINIMUM) DIAMETER PIPE SHALL BE USED FOR THE COMMON LINE AND A SIX INCH CLEANOUT EXTENDING TO WITHIN 12 INCHES OF THE GROUND SURFACE SHALL BE PROVIDED AT THE WYE WHERE THE UPPER GRADE CONNECTIONS ARE MADE. BACKWATER VALVES SHALL BE INSTALLED ON SERVICE LINES UPSTREAM OF THE CONNECTION TO THE SHARED SIDE SEWER.
14. THE CITY ENGINEER MAY REQUIRE BACKWATER VALVES ON SIDE SEWERS WHEN DEEMED NECESSARY. THE EFFECTIVE OPERATION AND MAINTENANCE OF ANY BACKWATER VALVE SHALL BE THE RESPONSIBILITY OF THE OWNER OF THE SIDE SEWER.
15. UTILITY PIPE TRACER TAPE SHALL BE DETECTABLE BELOW GROUND SURFACE, COLOR CODED, WITH UTILITY NAME PRINTED ON TAPE. CONDUCTIVE WARNING TAPE REQUIRED OVER ALL WATER PIPE. TAPE SHALL BE MANUFACTURER'S STANDARD PERMANENT, BRIGHT-COLORED, CONTINUOUS PRINTED PLASTIC TAPE, ALUMINUM BACKED, INTENDED FOR DIRECT-BURIAL SERVICE. TAPE SHALL BE NOT LESS THAN 6" WIDE X 4 MILS THICK.

CITY OF MERCER ISLAND

STANDARD DETAILS

SEWER

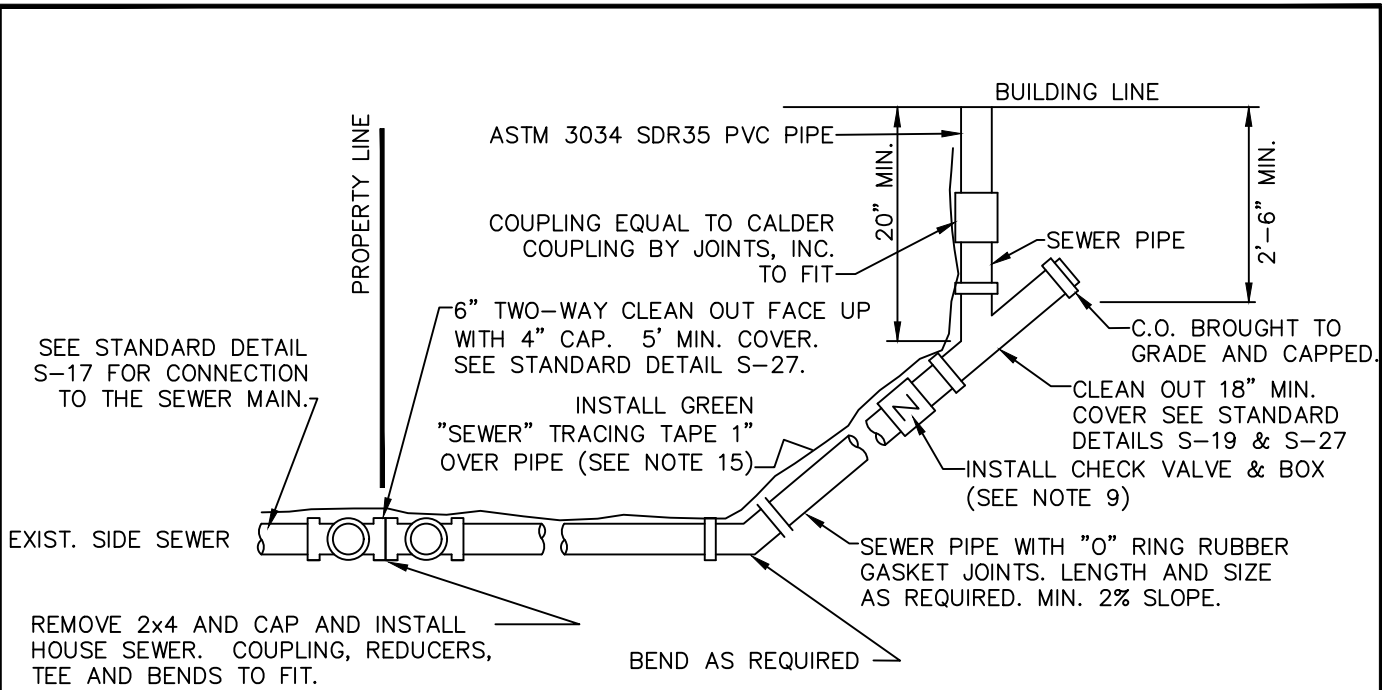
SIDE SEWER CONNECTION AND STUB

6-5-2009

NO SCALE

S-17


REV DATE						APPROVED
----------	--	--	--	--	--	----------

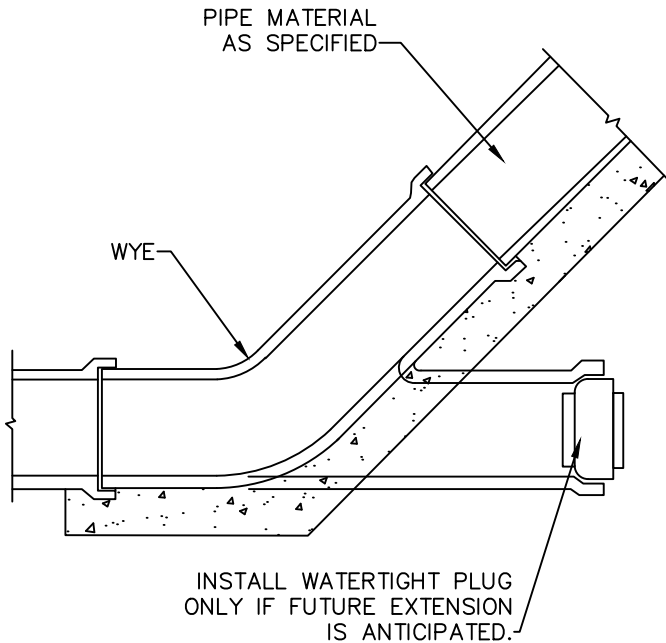
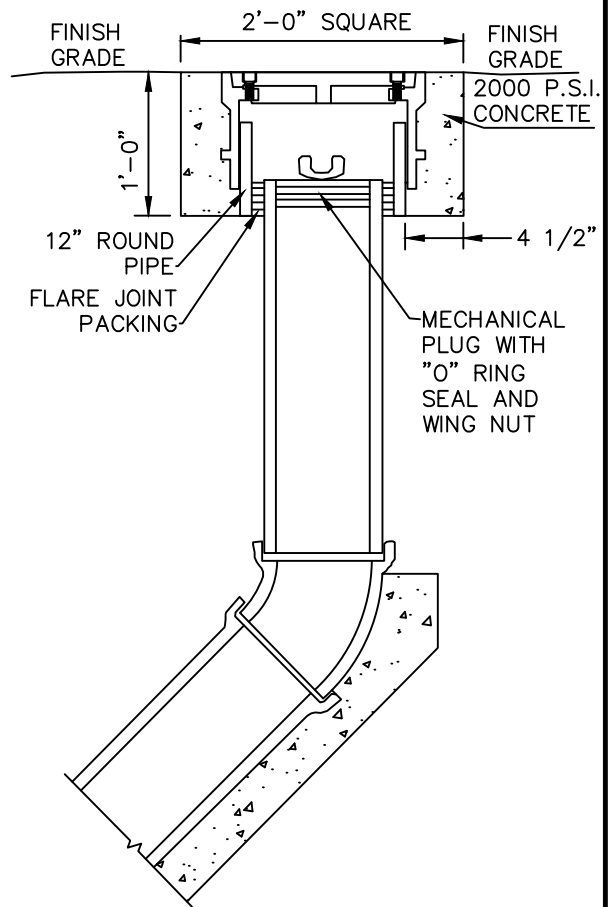
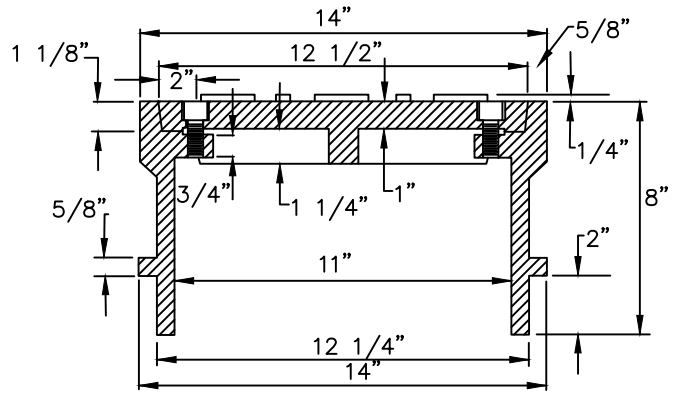
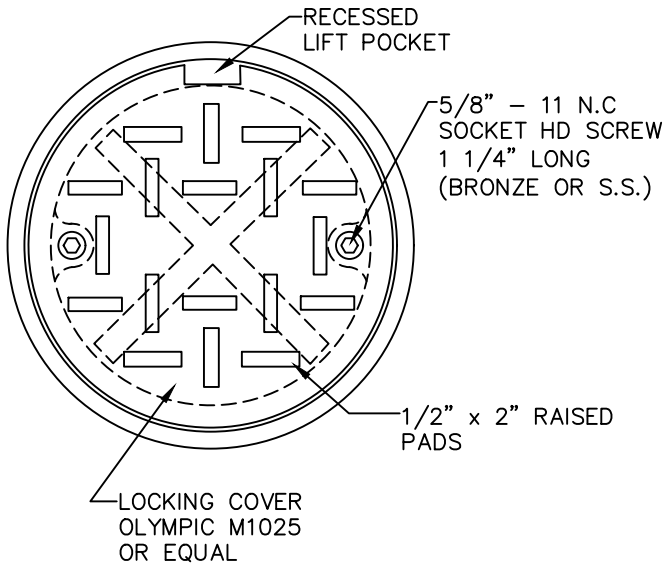


BUILDING CONNECTION

NOTES

1. ELBOWS SHALL NOT BE GREATER THAN 45 DEGREES.
2. CLEAN OUT IS REQUIRED FOR EACH PIPE LENGTH GREATER THAN 100' AND FOR EACH 90° ACCUMULATED ELBOW/100°.
3. ALL HOUSE PLUMBING OUTLETS MUST BE CONNECTED TO THE SEWER. NO DOWN SPOUTS OR STORM DRAINAGE MAY BE CONNECTED TO THE SEWER SYSTEM.
4. 18" MINIMUM COVERAGE OVER PIPE.
5. LAY PIPE IN STRAIGHT LINE BETWEEN BENDS. MAKE ALL CHANGES IN GRADE OR LINE WITH 1/8 BEND OR WYE. 90° CHANGE WITH 1/8 BEND AND WYE.
6. 4" SEWER PIPE MINIMUM SIZE ON PROPERTY. 2% MINIMUM GRADE.
7. ALL CONSTRUCTION SHALL BE IN ACCORDANCE WITH CURRENT SEWER ORDINANCES.
8. ALL CONSTRUCTION REQUIRES A PLAN SHOWING PROPERTY AND DIMENSIONS AND COMPLETION OF SIDE SEWER APPLICATION AND MAINTENANCE AGREEMENT, AS NEEDED.
9. BACK WATER VALVE (CHECK VALVE) IS REQUIRED:
 - A. IF CONNECTED TO A SHARED SIDE SEWER.
 - B. IF CONNECTION AT HOUSE IS LOWER THAN BOTH UPSTREAM AND DOWNSTREAM MANHOLE.
 - C. SEE S-23 & S-24 FOR LAKE LINE REQUIREMENTS.
10. AS-BUILT DRAWING SHOWING LOCATION OF SIDE SEWER & ALL BENDS, C.O. ETC., IN RELATION TO THE HOUSE IS REQUIRED AFTER INSPECTION & INSTALLATION. SEE STANDARD DETAIL S-38 FOR A TYPICAL "AS BUILT".
11. THE MINIMUM PIPE SIZE FOR SIDE SEWERS SHALL BE:
 - 6" - WITHIN THE PUBLIC RIGHT-OF-WAY.
 - 4" - SINGLE FAMILY RESIDENCES.
 - 6" - 2 TO 6 SINGLE FAMILY RESIDENCES.
 - 6" - BUILDINGS OTHER THAN SINGLE FAMILY RESIDENCES.
12. UTILITY PIPE TRACER TAPE SHALL BE DETECTABLE BELOW GROUND SURFACE, COLOR CODED, WITH UTILITY NAME PRINTED ON TAPE. CONDUCTIVE WARNING TAPE REQUIRED OVER ALL WATER PIPE. TAPE SHALL BE MANUFACTURER'S STANDARD PERMANENT, BRIGHT-COLORED, CONTINUOUS PRINTED PLASTIC TAPE, ALUMINUM BACKED, INTENDED FOR DIRECT-BURIAL SERVICE. TAPE SHALL BE NOT LESS THAN 6" WIDE X 4 MILS THICK.

	CITY OF MERCER ISLAND STANDARD DETAILS SEWER	
	HOUSE SEWER CONNECTION	
6-5-2009	NO SCALE	S-18
REV DATE		APPROVED



FOR PVC PIPE

NOTES

1. SEE S-27 FOR INSTALLATION DETAILS.



**CITY OF MERCER ISLAND
STANDARD DETAILS
SEWER**

CLEAN OUT DETAIL

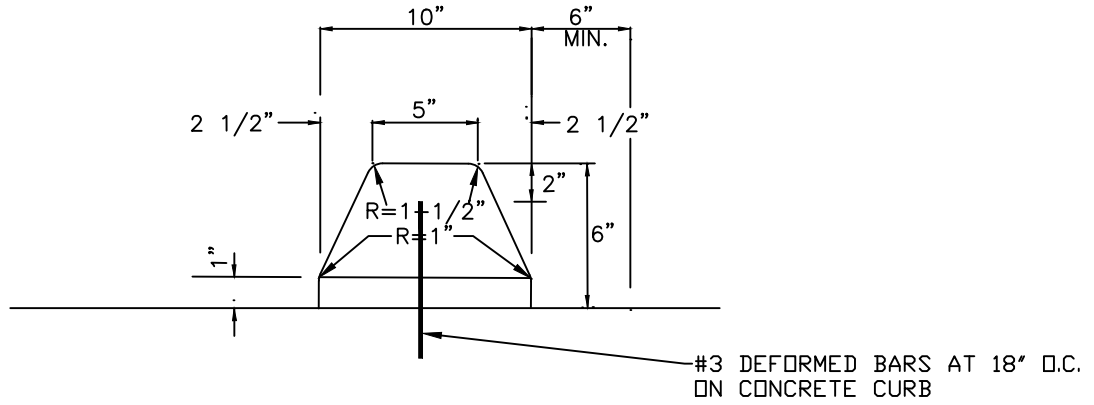
6-5-2009

NO SCALE

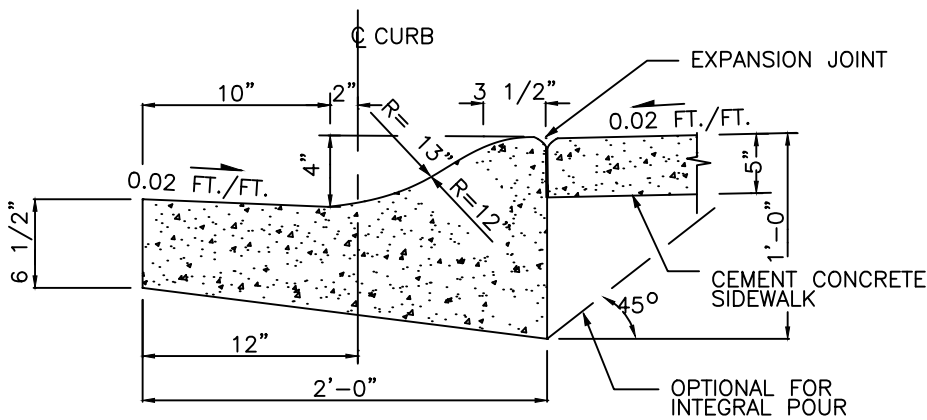
S-19

REV DATE

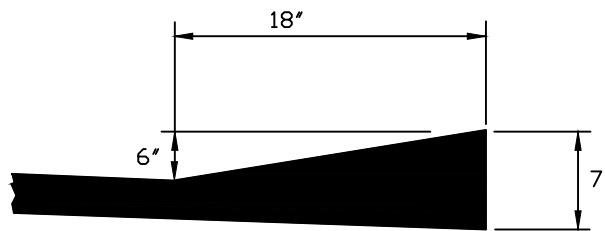
APPROVED



**EXTRUDED ASPHALT OR CEMENT
CONCRETE CURB**




CEMENT CONCRETE ROLLED CURB

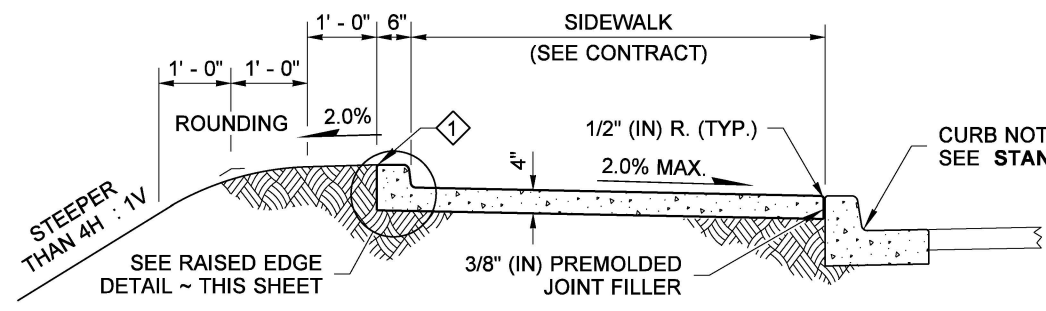


ASPHALT THICKENED EDGE

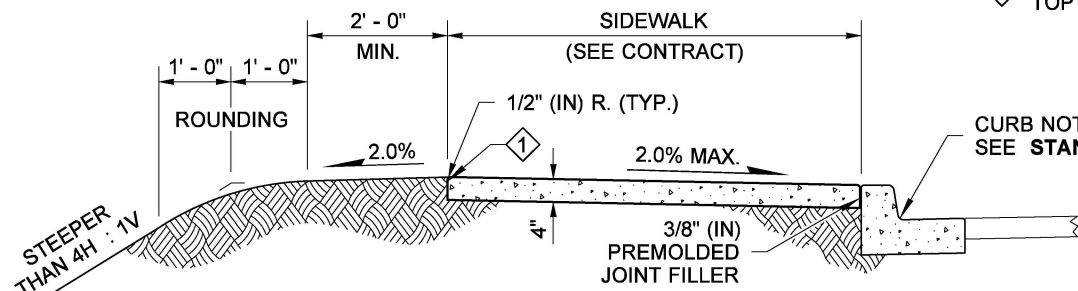
NOTES:

1. SEE DETAIL ST-14 FOR JOINT REQUIREMENTS.
2. ROLL GUTTER TO MATCH POSITIVE SUPERELEVATION.
3. SEE DRAWING NO. T-15A FOR CONFIGURATION OF FILL & WALKWAY BEHIND CURB IF REQUIRED.
4. FOR INTEGRAL POUR CONSTRUCTION, 1/4" EDGED GROOVE MAY REPLACE EXPANSION JOINT AT INTERFACE BETWEEN THE CURB AND ADJACENT SIDEWALK.

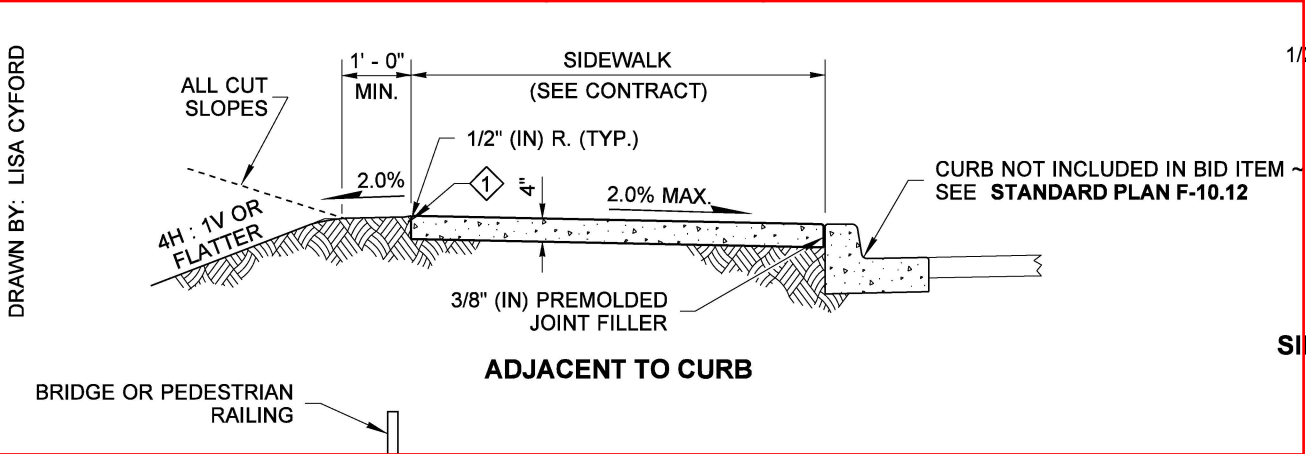
	CITY OF MERCER ISLAND STANDARD DETAILS STREETS	
	CURB DETAILS	
11/23/99	NO SCALE	ST-16



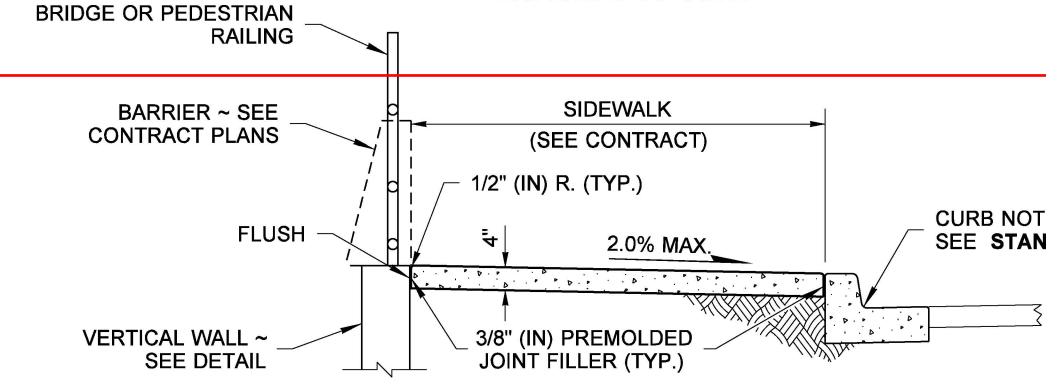
WITH RAISED EDGE



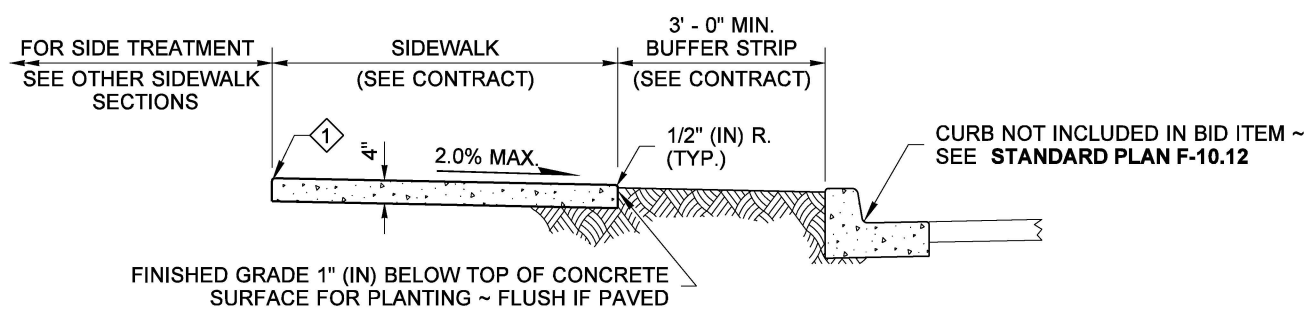
**ADJACENT TO CURB
(STEEP FILL SLOPES)**



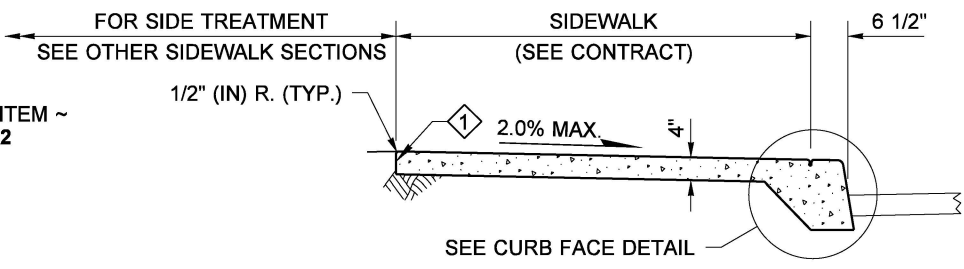
ADJACENT TO CURB



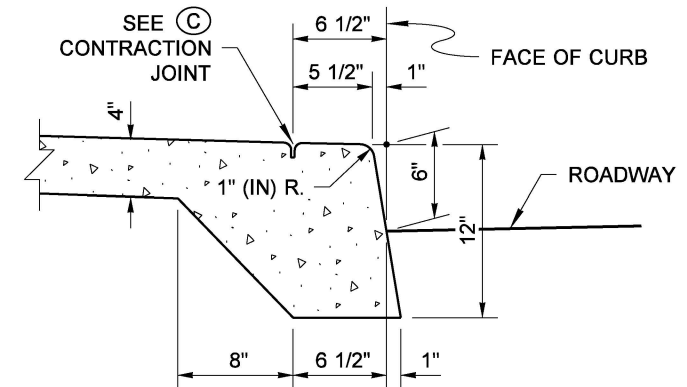
ADJACENT TO CURB AND RAILING OR WALL



ADJACENT TO BUFFER STRIP



**MONOLITHIC CEMENT CONCRETE
CURB AND SIDEWALK**



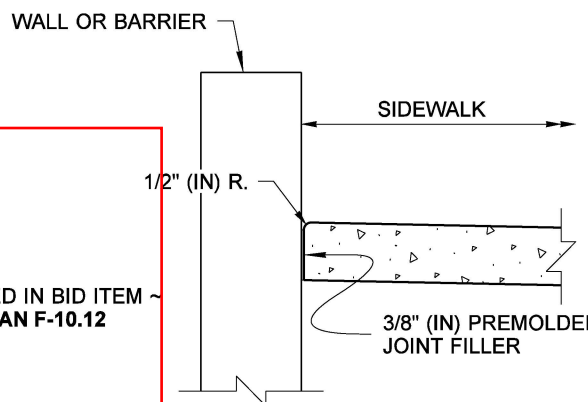
CURB FACE DETAIL

EXTEND SIDEWALK TRANSVERSE EXPANSION JOINTS TO INCLUDE CURB (FULL DEPTH)

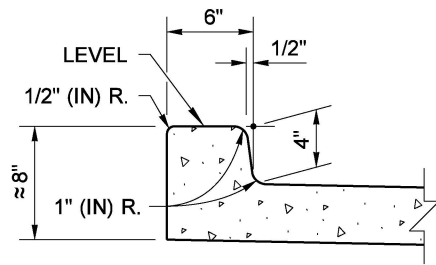
1 FINISHED GRADE 1" (IN) BELOW TOP OF CONCRETE SURFACE

NOTE

1. Gratings, Access Covers, Junction Boxes, Cable Vaults, Pull Boxes and other appurtenances within the sidewalk must have slip resistant surfaces, be flush with surface, and match grade of the sidewalk.

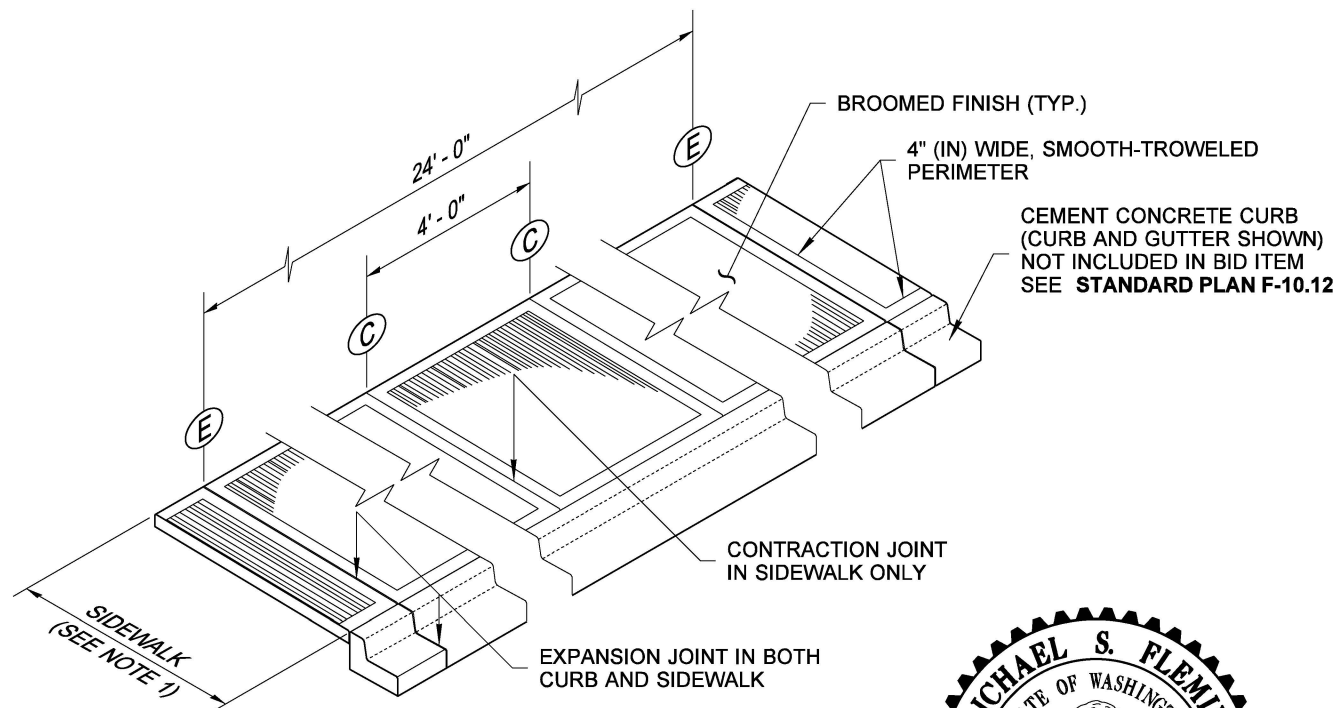


SIDEWALK ADJACENT TO WALL DETAIL

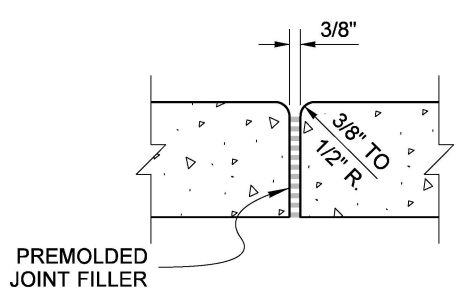


RAISED EDGE DETAIL

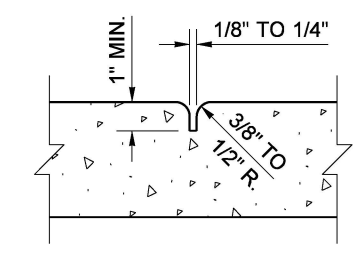
EXTEND SIDEWALK TRANSVERSE JOINTS TO INCLUDE RAISED EDGE



**ISOMETRIC VIEW
JOINT AND FINISH
DETAIL**



PREMOLDED JOINT FILLER



CONTRACTION JOINT



Michael S Fleming
Digitally signed by Michael S Fleming
Date: 2020.09.24 07:40:16 -07'00'

**CEMENT CONCRETE
SIDEWALK**

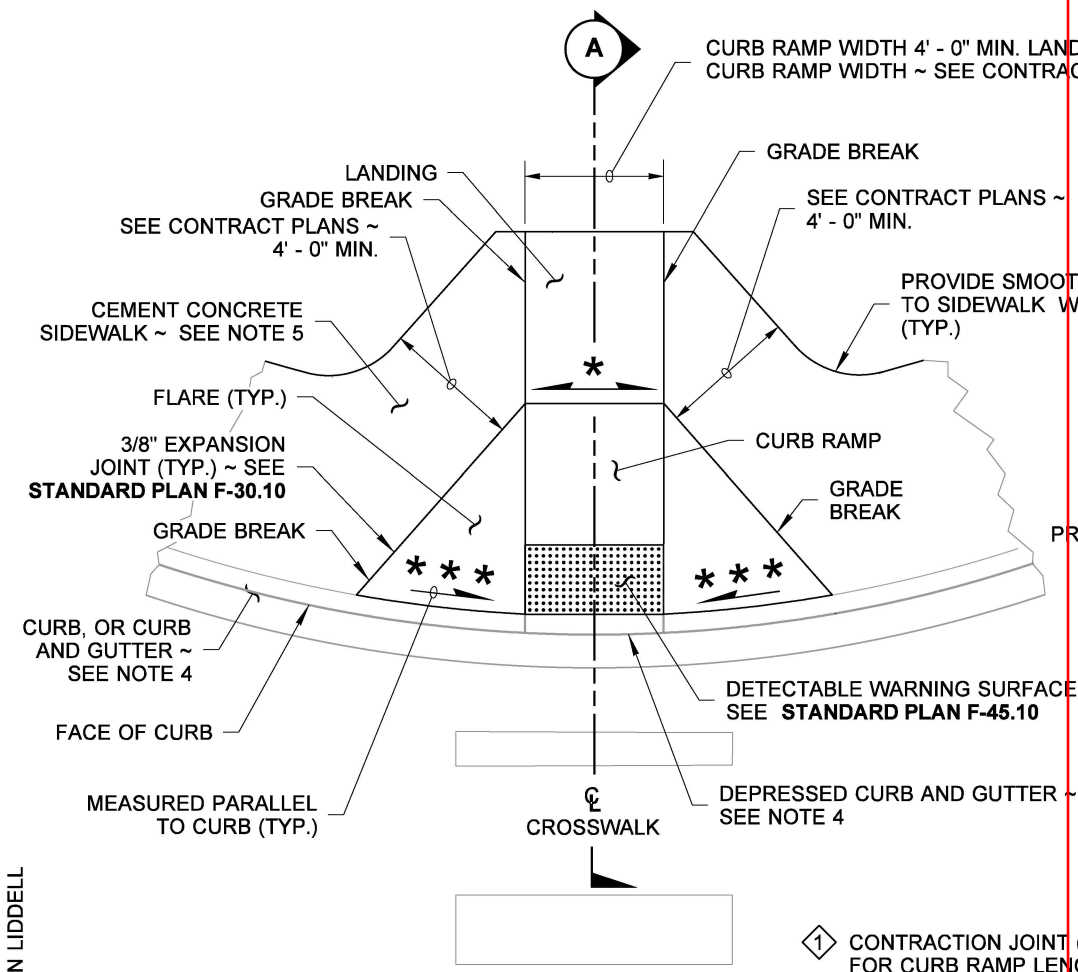
STANDARD PLAN F-30.10-04

SHEET 1 OF 1 SHEET

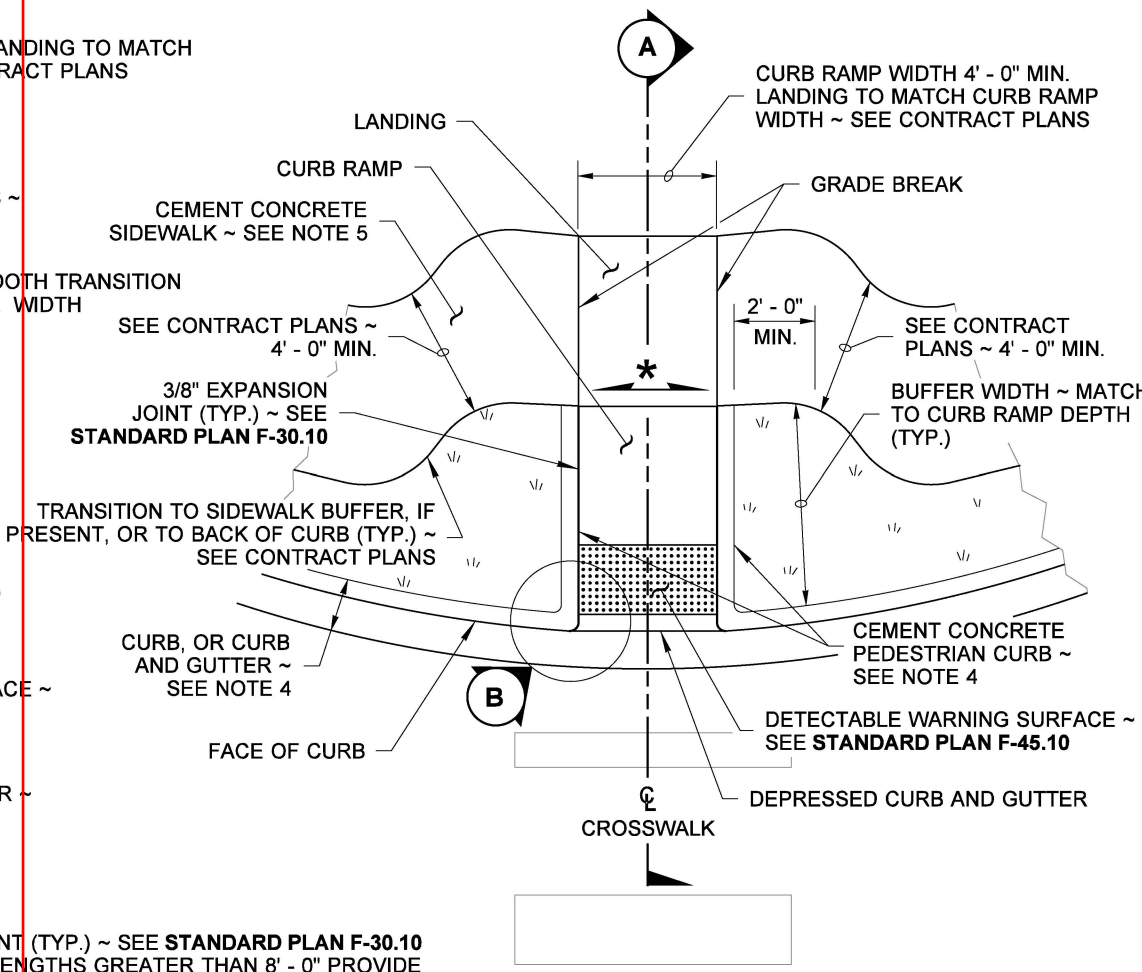
APPROVED FOR PUBLICATION
Date: 2020.09.25
15:43:50 -07'00'
STATE DESIGN ENGINEER
Washington State Department of Transportation

DRAWN BY: LISA CYFORD

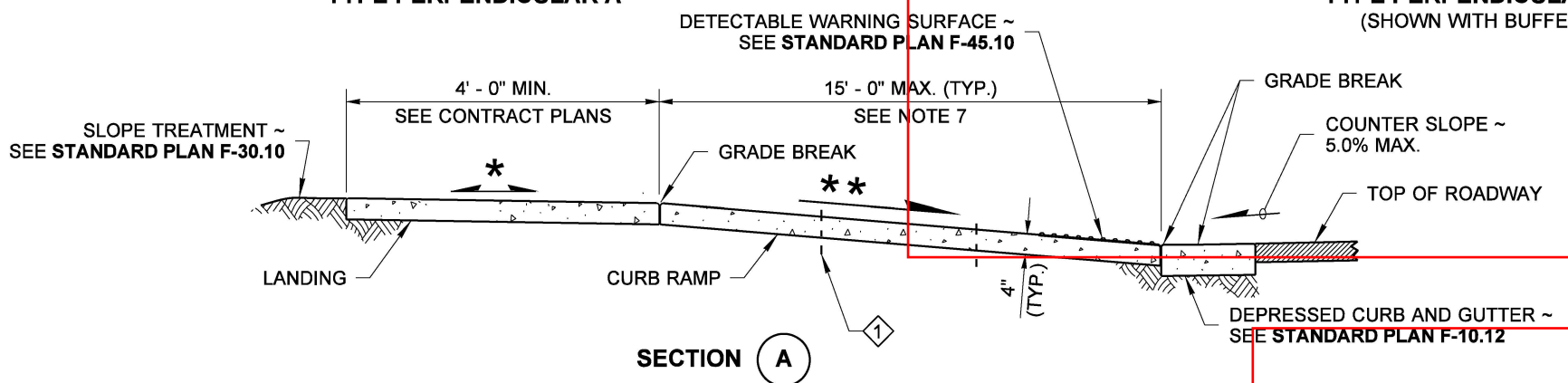
DRAWN BY: FERN LIDDELL



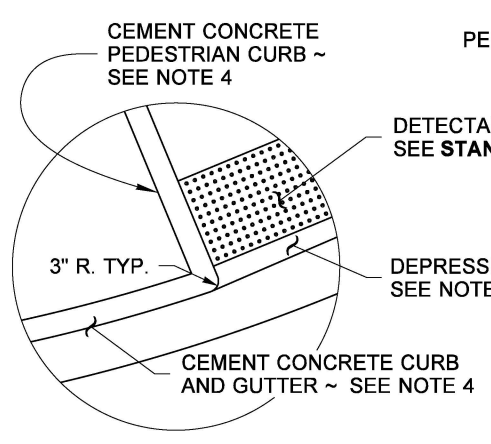
**PLAN VIEW
TYPE PERPENDICULAR A**



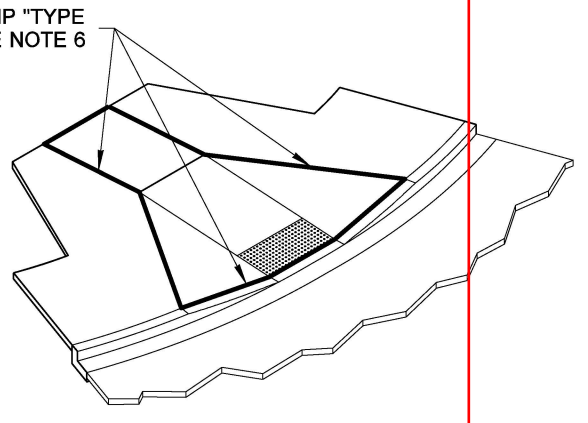
**PLAN VIEW
TYPE PERPENDICULAR B
(SHOWN WITH BUFFER)**



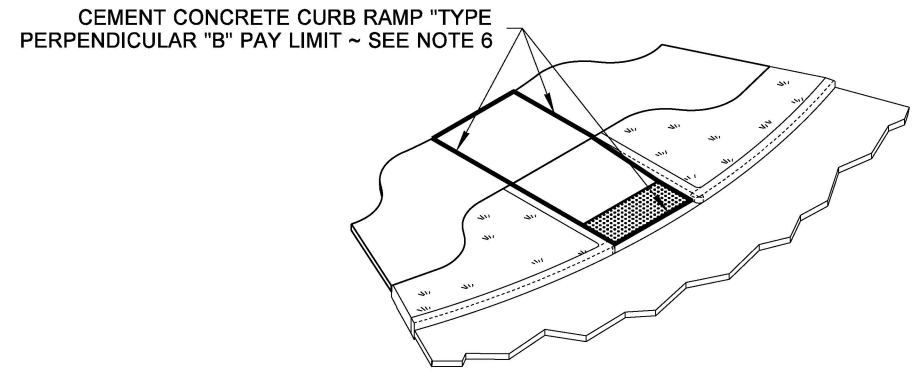
SECTION A



CURB RADIUS DETAIL B



**ISOMETRIC VIEW
TYPE PERPENDICULAR A PAY LIMIT**



**ISOMETRIC VIEW
TYPE PERPENDICULAR B PAY LIMIT**

NOTES

1. At marked crosswalks, the connection between the curb ramp and the roadway must be contained within the width of the crosswalk markings.
2. Where "GRADE BREAK" is called out, the entire length of the grade break between the two adjacent surface planes shall be flush.
3. Do not place Gratings, Junction Boxes, Access Covers, or other appurtenances on any part of the Curb Ramp or Landing, or in front of the Curb Ramp where it connects to the roadway.
4. See Contract Plans for the curb design specified. See **Standard Plan F-10.12** for Curb, Curb and Gutter, Depressed Curb and Gutter, and Pedestrian Curb details.
5. See **Standard Plan F-30.10** for Cement Concrete Sidewalk Details. See Contract Plans for width and placement of sidewalk.
6. The Bid Item "Cement Concrete Curb Ramp Type ___" does not include the adjacent Curb, Curb and Gutter, Depressed Curb and Gutter, Pedestrian Curb, or Sidewalks.
7. The Curb Ramp length is not required to exceed 15 feet (unless shown otherwise in the Contract Plans). When applying the 15-foot max. length, the running slope of the Curb Ramp is allowed to exceed 8.3%. Use a single constant slope from bottom of ramp to top of ramp to match into the landing over a horizontal distance of 15 feet. Do not include the abutting landing in the 15-foot max. measurement.
8. Curb Ramps and Landings shall receive a broom finish. See **Standard Specifications 8-14**.
9. Pedestrian Curb may be omitted if the ground surface at the back of the Curb Ramp and/or Landing will be at the same elevation as the Curb Ramp or Landing and there will not be material to retain.

LEGEND

- SLOPE IN EITHER DIRECTION
- 1.5% OR FLATTER RECOMMENDED FOR DESIGN/FORMWORK (2% MAX.)
- 7.5% OR FLATTER RECOMMENDED FOR DESIGN/FORMWORK (8.3% MAX.)
- 9.5% OR FLATTER RECOMMENDED FOR DESIGN/FORMWORK (10% MAX.)



Digitally signed by R. Scott Zeller
Date: 2020.09.22 13:23:53 -07'00'

**PERPENDICULAR
CURB RAMP
STANDARD PLAN F-40.15-04**

SHEET 1 OF 1 SHEET

APPROVED FOR PUBLICATION
Date: 2020.09.25
14:44:37 -07'00'
STATE DESIGN ENGINEER
 Washington State Department of Transportation

PROPOSED SIDEWALK EXHIBIT

